



## 4<sup>th</sup> INDUCT School

### Course book

Final version

(3th of September 2018)

**10 September – 14 September 2018**

*Prague, Czech Republic*



CHARLES UNIVERSITY



World Health  
Organization



Maastricht  
University

Time	Sun 09/09/18	Mon 10/09/18 With partners/beneficiaries (from 15pm)	Tue 11/09/18 With partners/beneficiaries	Wed 12/09/18 With partners/beneficiaries (until 11am) With IA (from 11am)	Thu 13/09/18 With IA	Fri 14/09/18
08:30		Coffee / tea and registration	Coffee / tea	Coffee / tea	Coffee / tea	Coffee / tea
09:00		<b>Welcome and program plan</b> By Dr. Fania Dassen & Prof. Iva Holmerová	<b>Welcome at 08.45h</b> By Prof. Martin Orrell & Dr. Deborah Oliveira	<b>Supervisory Board, Feedback and PoA from MTR</b> By Prof. Martin Orrell & Dr. Deborah Oliveira	<b>Dementia demographics around the world: Is the incidence of dementia really decreasing?</b> By Prof. Martin Prince	<b>Know yourself – Who am I as a leader? Competences, skills and surprises</b> By Ilona Schumacher
09:15		<b>Fellow Board (ESRs only)</b>	<b>ESR presentations, recommendations ESR 5-10, wrap up by WP4 lead – Prof. Rose-Marie Dröes</b>			
10:45		Transfer to CIIRC, coffee/tea there	Coffee / tea	Coffee / tea	Coffee / tea	Coffee / tea at 11h
11:15		<b>Excursion Czech Institute of Informatics, Robotics and Cybernetics – examples of technologies – dementia and ageing</b> By Prof. Olga Štěpánková	<b>Network session</b> By ESRs	<b>WHO-ADI Policy workshop</b> By Prof. Anne Margriet Pot & Wendy Weidner	<b>Why psychosocial research fits into the bigger picture</b> Prof. Frans Verhey & Prof. Marjolein de Vugt	<b>Spread the message: Communication with the media</b> By Prof. Iva Holmerová & journal editor Judita Matyášová (UK media centre)
12:30		Lunch at CIIRC	Lunch	Lunch	Lunch	Lunch
13:30	Arrival	<b>Excursion Czech Institute of Informatics, Robotics and Cybernetics - continued</b> By Prof. Olga Štěpánková	<b>ESR presentations, recommendations ESR 11-15, wrap up by WP5 lead - Prof. Lieve van den Block</b>	<b>WHO-ADI Policy workshop – continued</b> By Prof. Anne Margriet Pot & Wendy Weidner	<b>Funding opportunities and grant proposal writing</b> By Prof. Lieve van den Block	<b>Spread the message: Communication with the media – continued</b> By Prof. Iva Holmerová & Judita Matyášová
15:00		Transfer from CIIRC, coffee/tea at ILF	Coffee / tea	Coffee / tea	Coffee / tea	Close, evaluation, and certificates
15:30		<b>Short introduction ESR sessions</b> <b>ESR presentations, recommendations ESR 1-4, wrap up by WP3 lead – Prof. Louise Nygård</b>	<b>WP steering groups</b> By WP Leads	<b>Utilising event logging, ecological momentary assessment &amp; machine learning: Implications for studies of people living with dementia and their carers</b> By Prof. Maurice Mulvenna	<b>Effective oral presentations</b> By Dr. Aline De Vleminck & Prof. Lieve van den Block	<b>Departure</b>
17.00						
Evening	<b>Welcome dinner / reception</b>	Evening free	<b>Celebratory dinner</b>	Evening free	Evening free	

## Content

<b>1.</b>	<b>Welcome address</b>	<b>1</b>
<b>2.</b>	<b>Practical information</b>	<b>2</b>
2.1	Registration and accommodation for ESRs	
2.2	Registration and accommodation for speakers, beneficiaries and second-level partners	
2.3	Locations	
2.4	Travel	
2.5	Executive office	
<b>3.</b>	<b>Course information</b>	<b>7</b>
3.1	General information about the INDUCT Schools	
3.2	Aims of the 4 <sup>th</sup> INDUCT School	
<b>4.</b>	<b>Programme</b>	<b>9</b>
4.1	Sunday 9 <sup>th</sup> of September	
4.2	Monday 10 <sup>th</sup> of September	
4.3	Tuesday 11 <sup>th</sup> of September	
4.4	Wednesday 12 <sup>th</sup> of September	
4.5	Thursday 13 <sup>th</sup> of September	
4.6	Friday 14 <sup>th</sup> of September	
<b>5.</b>	<b>Activities, assignments, and literature</b>	<b>14</b>
5.1	Preparation	
5.2	General assignments	
5.3	Monday 10 <sup>th</sup> of September	
5.4	Tuesday 11 <sup>th</sup> of September	
5.5	Wednesday 12 <sup>th</sup> of September	
5.6	Thursday 13 <sup>th</sup> of September	
5.7	Friday 14 <sup>th</sup> of September	
5.8	Evaluation	
<b>6.</b>	<b>Speakers, moderators and coordinators</b>	<b>27</b>
<b>7.</b>	<b>ESRs</b>	<b>39</b>
<b>8.</b>	<b>INDUCT and INTERDEM Academy delegates</b>	<b>44</b>

## 1. Welcome address

We are pleased to host the 4th INDUCT School, organized by WHO and Charles University Prague. We would like to thank everyone who has been involved in drafting the program and arranging the School, as well as the invited speakers and all other presenters for their contributions.

Lastly we would like to express our gratitude to the INTERDEM and INTERDEM Academy networks, and the European Commission for their continued support. We look forward to an interesting, stimulating meeting and hope you will enjoy your time in the Czech Republic.

### ***4<sup>th</sup> INDUCT School - Local Coordinators***

*Prof. Iva Holmerová, Ms Iff Kolářová, Prof. Olga Štěpánková*

### ***WHO***

*Prof. Anne Margriet Pot*

### ***INDUCT Training team (WP2)***

*Prof. Frans Verhey, Prof. Marjolein de Vugt, Dr. Fania Dassen, Ms Daniëlle Moens*

### ***INDUCT Management team (WP1)***

*Professor Martin Orrell, Dr. Deborah Oliveira, Ms Ann Gibbons*



## 2. Practical information

### 2.1 Registration and accommodation for ESRs

ESRs can register for the 4<sup>th</sup> INDUCT School by filling out the online form:

<https://docs.google.com/spreadsheets/d/1GN7VaeyoxgCt0K8UBGIbRTv1rCg5wk2VXGltT0E NG8Q/edit#gid=0>

**Registration includes:**

- Admission to the event for the whole week
- Lunch
- Coffee / tea and refreshments
- Sunday evening welcome reception
- Tuesday evening celebratory dinner (*location to be announced during the School*)

**Registration does not include:**

- Travel
- Accommodation

These expenses should be paid from ESRs' own local training budgets. Questions can be directed to Deborah Oliveira: [Deborah.Deoliveira@nottingham.ac.uk](mailto:Deborah.Deoliveira@nottingham.ac.uk).

Our venue and accommodation will be Hotel ILF. **Please note that the hotel will expect you to pay your accommodation upon check-out.**

### 2.2 Registration and accommodation for speakers, beneficiaries and 2<sup>nd</sup>-level partners

Speakers, Beneficiaries and 2<sup>nd</sup> level partners can register for the 4<sup>th</sup> INDUCT School by filling out this link:

<https://docs.google.com/spreadsheets/d/1ehRmQmqjBL9rAV4j0h4tFv7N4DwlXqnV-WXXx7quA5o/edit#gid=0>

**Registration includes:**

- Admission to the event on the day(s) you have registered
- Lunch
- Coffee / tea and refreshments
- Sunday evening welcome reception (if applicable)
- Tuesday evening celebratory dinner (*location to be announced later*)

Speakers at the event will be reimbursed for their travel expenses by the training institute (Maastricht University).

Beneficiaries should use their locally held INDUCT budget to pay for travel and stay for the INDUCT School(s). **Please note that the hotel will expect you to pay your accommodation upon check-out.**

2<sup>nd</sup>-level partners can be reimbursed for their travel expenses by the management institute (University of Nottingham). Questions can be directed to Dr. Deborah Oliveira: [Deborah.Deoliveira@nottingham.ac.uk](mailto:Deborah.Deoliveira@nottingham.ac.uk)

## 2.3 Locations

**Venue, accommodation, location of Sunday evening's welcome reception:**

Hotel ILF \*\*\*  
Budějovická 15/743  
140 00 Praha 4 - Michle  
[www.hotel-ilf.cz](http://www.hotel-ilf.cz)

*Location of the celebratory dinner on Tuesday evening will be announced later.*

## 2.4 Travel

### TRANSPORT FROM THE AIRPORT TO THE VENUE (HOTEL ILF)

To get from the Prague Václav Havel Airport to Hotel ILF (<https://en.mapy.cz/s/2F8lY>), there are basically four ways, respecting the usual rule that the easiest one is the most expensive one and the cheapest one is the most complicated one:

#### 1) VIA THE TWO OFFICIAL AIRPORT TAXI SERVICES.

“Taxi Praha” and “Fix Taxi” – white cars of these two services park right at the ARRIVALS, at both terminals. The cost for this particular route (see the link above) should be approximately 900 – 1000 CZK (around 35 - 40 EUR) and should take less than 45 minutes. There is no need to order in advance but you can still do it:

Taxi Praha <http://www.taxi-praha.cz/> tel. +420 222 111 000

Fix Taxi <http://fix-taxi.cz/> tel. +420 722 555 525

#### 2) VIA OTHER TAXI SERVICES.

These are only allowed to pick you up at the free short term parking area in front of the DEPARTURES of Terminal 2. These three services should get you to our venue for around 700 CZK (cca 30 EUR) and again, it should take less than 45 minutes.

AAA Taxi, tel. +420 222 333 222, <https://www.aaataxi.cz/en/>

Modrý Anděl, tel.. +420 737 222 333, <https://www.modryandel.cz/en>

Or still more popular UBER, <https://www.uber.com/en-CZ/cities/prague/> - you need to have the application, the guide is to be found here: <https://www.uber.com/en-CZ/ride/how-uber-works/>

### **PAYMENT FOR THE TAXI SERVICES**

In both cases, **before you get into the taxi car**, make sure you negotiate the approximate price and inform the driver that you will need a receipt. Even though I have only mentioned services with a relatively good reputation, be better safe than sorry. Some taxi drivers may take an advantage of you, especially if it is your first time in Prague.

It should be possible to pay with your bank card in most of the cars but it is always advisable to **ask the driver in advance** and at the same time **have some cash handy**.

### **3) COMBINATION OF THE AIRPORT EXPRESS BUS (AE BUS) AND =METRO= LINE C (RED).**

The cost is **68 – 92 CZK (2,75 – 3,70 EUR)**, the route should take about 60 minutes altogether. The **AE bus** operates from **5:30 to 22:30** with 15 minutes to 30 minutes interval. You will need **AE bus ticket** and a **public transport ticket** for this trip. With public transport ticket you need to make sure to **validate the ticket in the validator before you enter the paid zone of the =Metro=**.

You can obtain both tickets at the VISITOR CENTRE (there is one at the ARRIVAL section of both terminals, opening hours are **8-20 at Terminal 1** and **8-22 at Terminal 2**). They have the Airport Express ticket at a discount price of 44 CZK (cca 1,75 EUR) and the 90-minute public transport ticket (32 CZK, cca 1,30 EUR) there. The **AE** ticket can also be bought from the **AE bus driver** for 60 CZK, then you can purchase a 24 CZK public transport ticket at the **=Metro= line C** (it is valid for 30 minutes and you need to consider the inconvenience of looking for the service point or the ticket machine).

**Airport Express bus station** is right in front of the **EXIT F of Terminal 1** and it will take you to the Prague Main Railway Station (Praha – Hlavní nádraží) where you change for the **=Metro= C line (RED)**, in direction **HÁJE**, the station to get off is **BUDĚJOVICKÁ**. From there it is approximately a 5-minute walk (<https://en.mapy.cz/s/2F8QO>).

More information about Airport Express can be found here:

<http://www.ceskedrahy.cz/en/vnitrostatni-cestovani/specialni-nabidky/airport-express-na-letiste-praha/-8899/>

### **4) VIA PUBLIC TRANSPORT ALL THE WAY.**

On Sunday the route should take around 60 mins, total cost is 32 CZK (cca 1,30 EUR). For this trip you only need to use **one 90-minute public transport ticket**. The ticket can be obtained at the VISITOR CENTRE or at the PUBLIC TRANSPORT company stand right at the airport.

**Do not forget to validate the ticket right after you enter the first public transport vehicle** (in this case, the bus No. 119).

You take **Bus No. 119** (Terminal 1 – Exit F, Terminal 2 – Exit E) to **NÁDRAŽÍ VELESLAVÍN** bus terminal (the final stop), then the **=Metro= line A (GREEN)**, in direction of Depo Hostivař to the MUZEUM station, where you change for **=Metro= line C (RED)** in direction **HÁJE**, the station to get off is **BUDĚJOVICKÁ**. From there it is approximately a 5-minute walk (<https://en.mapy.cz/s/2F8QO>).

### **MORE INFORMATION REGARDING PUBLIC TRANSPORT IN PRAGUE:**

#### **TYPES OF TICKETS**

Depending on the length of your stay and your plans, you may be interested in having

additional public transport options. There are 30-minute (24 CZK) and 90-minute tickets (32 CZK); in case you want to travel a lot within a day, you may also choose 1-day (24 hours) ticket (110 CZK) or 3-day (72 hours) ticket (310 CZK). In case you want or need to stay more than a week and travel a lot within Prague limits, you may prefer 30-day ticket for 670 CZK.

### **VALIDITY AND VALIDATION OF TICKETS**

These tickets are **ALL** valid within the Prague city limits and when used for the first time they **MUST be validated** in a validator (a small yellow box in a tram/bus or in front of the escalators at the =Metro=). The machine prints the time on the ticket and from that moment it is valid for a specified time period. **The ticket must be validated only ONCE** (if you do it again, you might get a fine of 400 CZK).

### **WHERE TO BUY THE TICKETS**

You can buy these tickets at the automatic vending machines, at the **VISITOR CENTRE** (opening hours are **8-20 at Terminal 1** and **8-22 at Terminal 2**) or at the **PUBLIC TRANSPORT company stand** (operates **8-21**) at the airport. They also have a PUBLIC TRANSPORT maps there.

Most of the automatic vending machines at the airport can process the payment with your contactless bank card but **in the CITY it is necessary to have some change**. The machines take all the existing CZK coins and should not require the exact change. Only some of the machines in the city centre are able to take banknotes and bank cards.

### **MONEY**

Though in the city centre you may be able to pay with EUROS or your bank card, it may not be possible everywhere. For your convenience, try to have some Czech Crowns with you. If you need to change money at the spot, it is strongly recommended to visit any **BANK**. The exchange points do not have good rates and many of them even the reputation.

Because many of you are coming to Prague on Sunday when the banks (including those at the airport) are closed, please consider that the very best option to have some cash ready in CZK is to **get it at your bank before you start your journey**, it can save you a lot of time and stress after your arrival.

## 2.5 Executive Office

In case of questions or requests, please contact:

### Program

Prof. Frans Verhey (Training Coordinator): [f.verhey@maastrichtuniversity.nl](mailto:f.verhey@maastrichtuniversity.nl)

### Registration, course book and reading materials:

Dr. Fania Dassen (Training Manager): [f.dassen@maastrichtuniversity.nl](mailto:f.dassen@maastrichtuniversity.nl); [Interdem-summer@maastrichtuniversity.nl](mailto:Interdem-summer@maastrichtuniversity.nl)

+31 (0)43 388 4099

### Reimbursement:

Ms. Daniëlle Moens: [d.moens@maastrichtuniversity.nl](mailto:d.moens@maastrichtuniversity.nl); [interdem-summer@maastrichtuniversity.nl](mailto:interdem-summer@maastrichtuniversity.nl)

### Local and travel arrangements:

Prof. Iva Holmerová: [iva.holmerova@gerontocentrum.cz](mailto:iva.holmerova@gerontocentrum.cz)

Ms. Iff Kolářová: [fishes@centrum.cz](mailto:fishes@centrum.cz), +420 777 888 426



## 3. Course information

### 3.1 General information about the INDUCT Schools

Within INDUCT there will be five INDUCT Schools of 5 days / 6 ECTS / 120 hours each including preparation time. These Schools are compulsory for the 15 INDUCT ESRs, and will also be partly attended by INTERDEM Academy researchers.

Speakers and participants from academic and non-academic partners will have invited talks in each session. ESRs will present their own work to their peers and senior colleagues. From the 4<sup>th</sup> school onwards, representatives of the European Working Group of People with Dementia will no longer present during the schools, but they will provide their input on the ESR projects at a separate EWGPWD event, this year scheduled at the 5<sup>th</sup> of December in Brussels.

By bringing together the expertise of private, public and voluntary sectors, each INDUCT School will thus offer a unique, network-wide programme. Training seminars will focus on Dementia care-specific research skills (Level 1) as well as transferable skills (Level 2).

**Dementia care-specific research skills training (Level 1).** ESRs need to be aware of challenges regarding people with dementia as advisors to their projects, participant recruitment, informed consent, communication styles, and the logistics of working with people with dementia. Secondly, to pursue excellence, INDUCT ESRs need to understand the methodological aspects of quantitative and qualitative evaluation of care and support interventions. Thirdly, they need to be equipped with a cutting edge overview of the latest developments regarding technological innovations and applications for dementia care and support.

**Transferable skills training (Level 2).** These sessions will prepare our ESRs for future employment in academia, health care, industry or the voluntary sector. An all-round training consisting of seminars on entrepreneurship, (inter)national dementia policies, leadership qualities, cross-cultural challenges, international collaboration, implementation of care innovations and knowledge dissemination will be offered.

As a proof of excellence, all ESRs will receive a certificate showing attendance of events organized within INDUCT. An evaluation questionnaire will be distributed at the end of each event allowing statistics to be collected relating to the attendance outside / inside the network to ensure openness, transparency and accountability of the quality evaluations and to provide input to improve upcoming INDUCT Schools.

## 4. Programme

### 3.2 Aims of the 4<sup>th</sup> INDUCT School

The 4<sup>th</sup> INDUCT School will be a great opportunity to:

1. Learn from to the expertise of the INDUCT partners (**Training sessions**)
2. Discuss current developments, contributions to transversal recommendations and future plans (**INDUCT Project meetings**)
3. Network with fellow ESRs, as well as the academic, industrial and health and social care partners in the network (**Social and networking events**)

Three types of activities will be provided within the week:

#### *Training sessions*

Training sessions are to offer a grand introduction to INDUCT's expertise when it comes to research methodology (academic and industry partners), key projects within or outside the consortium (academic and industry partners), or dementia policies and dissemination of your research (dementia, health and social care organizations).

Lectures aim to highlight key projects within or outside of INDUCT and are set up to be interactive. The speakers will actively seek the feedback, input and thoughts of the participants attending the School. Workshops will include a variety of work forms.

#### *INDUCT Project seminars*

INDUCT Project seminars are meant to inform and discuss current developments and future plans with regards to:

- Management, roles and communication
- Research projects
- Impact, recommendations and dissemination
- Training, supervision, and Personalized Career Development Plans (PCDPs)
- Secondments

#### *Social and networking events*

Social and networking events are meant to get to know one another in a relatively more informal way. On Sunday evening (*arrival*) we have scheduled a welcome reception at Hotel ILF. On Tuesday a network session has been organized by the ESRs and a celebratory dinner has been scheduled in the evening (*location to be announced*).

## Sunday 9<sup>th</sup> of September

### **Evening**

*Time to be announced*

**Welcome reception at the venue**

## Monday 10<sup>th</sup> of September

### **Morning**

08:30 - 09:00 Coffee / tea and registration

09:00 - 09:15 **Welcome, program plan**

*by Prof. Iva Holmerová and Dr. Fania Dassen*

09:15 - 10:45 **Fellow board** (restricted session for ESRs and Ombudsman)

10:45 - 11:15 Transfer to CIIRC, coffee and tea there

11:15 - 12:30 **Excursion Czech Institute of Informatics, Robotics and Cybernetics – examples of technologies – dementia and ageing**

*By Prof. Olga Štěpánková*

12:30 - 13:30 Lunch at CIIRC

### **Afternoon**

13:30 - 15:00 **Excursion Czech Institute of Informatics, Robotics and Cybernetics – examples of technologies – dementia and ageing**

*By Prof. Olga Štěpánková*

15:00 - 15:30 Transfer to CIIRC, coffee and tea at ILF

15:30 - 17:00 **Short introduction goal of ESR Sessions**

**ESR presentations & recommendations, ESR 1-4**

*Wrap up by Prof. Louise Nygård*

17:00 - 17:15 **Close and evaluation**

**Evening free**

## Tuesday 11<sup>th</sup> of September

### ***Morning***

08:30 – 08.45	Coffee / tea
08:45 – 09:00	<b><i>Welcome</i></b> - By Prof. Martin Orrell & Dr. Deborah Oliveira
09:00 - 10:45	<b><i>ESR presentations &amp; recommendations, ESR 5-10</i></b> <i>Wrap up by Prof. Rose-Marie Dröes</i>
10:45 - 11:15	Coffee / tea
11:15 - 12:30	<b><i>Network session</i></b>
12:30 - 13:30	Lunch at the venue

### ***Afternoon***

13:30 - 15:00	<b><i>ESR presentations &amp; recommendations, ESR 11-15</i></b> <i>Wrap up by Prof. Lieve van den Block</i>
15:00 - 15:30	Coffee / tea
15:30 - 17:00	<b><i>WP steering groups</i></b> - By WP leads
17:00 - 17:15	<b><i>Close and evaluation</i></b>

### ***Evening***

***Celebratory dinner*** – location to be announced



## Wednesday 12<sup>th</sup> of September with INTERDEM Academy

### **Morning**

08:30 - 09:00	Coffee / tea
09:00 – 10.45	<b><i>Supervisory board, Feedback and PoA from MTR (restricted session)</i></b> By Prof. Martin Orrell & Dr. Deborah Oliveira
10:45 - 11:15	Coffee / tea and welcome/registration for Interdem Academy members
10:15 - 12:30	<b><i>WHO-ADI Policy workshop</i></b> By Prof. Anne Margriet Pot & Ms. Wendy Weidner
12:30 - 13:30	Lunch at the venue

### **Afternoon**

NOTE: TWO PARALLEL SESSIONS FROM 13:30 - 15:00

13:30 - 15:00	<b><i>WHO-ADI Policy workshop continued</i></b> By Prof. Anne Margriet Pot & Ms. Wendy Weidner
13:30 - 15:00	<b><i>INDUCT International Advisory Board (restricted session)</i></b>
15:00 - 15:30	Coffee / tea
15:30 - 17:00	<b><i>Utilising event logging, ecological momentary assessment &amp; machine learning: Implications for studies of people living with dementia and their carers</i></b> By Prof. Maurice Mulvenna
17:00 - 17:15	<b><i>Close and evaluation</i></b>

### **Evening free**





## Thursday 13<sup>th</sup> of September with INTERDEM Academy

### ***Morning***

08:30 - 09:00	Coffee / tea
09:00- 10:45	<b><i>Dementia demographics around the world: Is the incidence of dementia really decreasing?</i></b> By Prof. Martin Prince
10:45 - 11:15	Coffee / tea
11:15 - 12:30	<b><i>Why psychosocial research fits into the bigger picture</i></b> By Prof. Frans Verhey & Prof. Marjolein de Vugt
12:30 - 13:30	Lunch at the venue

### ***Afternoon***

13:30 - 15:00	<b><i>Funding opportunities and grant proposal writing</i></b> By Prof. Lieve van den Block
15:00 - 15:30	Coffee / tea
15:30 - 17:00	<b><i>Effective oral presentations</i></b> By Dr. Aline De Vleminck & Prof. Lieve van den Block
17:00 - 17:15	<b><i>Close and evaluation</i></b>

### ***Evening free***

## Friday 14<sup>th</sup> of September

### ***Morning***

08:30 - 09:00 Coffee / tea

09:00 – 11.00 ***Know yourself – Who am I as a leader? Competences, skills and surprises*** By Ms. Ilona Schumacher

11.00 - 11:15 Coffee / tea

11:15 - 12:30 ***Spread the message: Communication with the media***  
By Prof. Iva Holmerová & journal editor Judita Matyášová

12:30 - 13:30 Lunch at the venue

### ***Afternoon***

13:30 - 15:00 ***Spread the message: Communication with the media – continued*** By Prof. Iva Holmerová & Ms. Judita Matyášová

15:00 - 15:30 ***Close, evaluation, and certificates***

### ***Departure***

## 5. Activities, assignments and literature

### 5.1 Preparation

Below you will find an overview of the content of the sessions, how to prepare and what to read in advance.

Please note that there are preparatory questions as well as preparatory assignments. **Preparatory questions** are meant take stock of your research needs, experience and background, which will enable the speakers to tailor the content of their seminars. **Preparatory assignments** are specific tasks that require you to bring something to the seminar – this can be an elevator pitch, a lay summary of your research, etc. There are also **reading materials** provided for some of the sessions.

You are encouraged to submit these questions and prepare the assignments, as well as to read the literature well before the start of the School. Please send the preparatory questions to the speakers before the deadlines (more information below).

In addition, some of the speakers have requested that you bring your laptop to the School. Bringing your smart phones, and/or tablet could be helpful as well.

The course book and reading materials can be found on the e-campus.

### 5.2 General assignments

#### ***Availability of Ombudsman during the School***

*Here is a message from INDUCT Ombudsman Nancy Nicolson:*

ESRs, I will attend the 4th INDUCT School from Sunday evening through Tuesday lunchtime. Please let me know beforehand if there are specific concerns you think might be useful to talk with me about, as a group. I will again stop in during the last half hour of your Fellow Board meeting, in case anything has come up that you think might benefit from my input. If you have questions or issues you would prefer to discuss with me individually, that's always possible; just contact me and we'll make a separate appointment (could also be Sunday or Monday evening). In either case - group or individual - these discussions will remain confidential unless you request otherwise.

Supervisors, I am of course also available for consultations with you and am also willing to take part in team discussions aimed at resolving minor conflicts, if team members request a meeting. Given the already full schedule during the first days of

INDUCT School, we would need to plan formal consultations or meetings at least a few days in advance.

You can send me an e-mail ([n.nicolson@maastrichtuniversity.nl](mailto:n.nicolson@maastrichtuniversity.nl)) and also contact me during the School (+31 6 8324 5387). As always, I'm available throughout the year for telephone or Skype consultations.

*Reading materials:*

INDUCT Ombudsman role description

### 5.3 Monday 10<sup>th</sup> of September

*Fellow board*

Chairs: ESR representatives

Support (if necessary): Dr. Deborah Oliveira, Dr. Nancy Nicolson

The Fellow Board (FB) aims to give ESRs the opportunity to discuss progress, on-going issues, opportunities, etc. You will all have 1.5 hour for this meeting. The agenda for meeting will be decided by yourselves prior to the School. Deborah Oliveira will be available for any questions related to project management. Ombudsman Nancy Nicolson will join during **the last half hour** of the meeting in case you need to discuss certain concerns with her as a group.

*Preparatory assignments:*

**For ESR Reps:** please prepare, and circulate relevant documents to fellow ESRs ahead of the meeting. Bring printouts of these documents to the Fellow Board.

**For other ESRs:** please have a look at relevant documents ahead of the meeting. It would be advisable to already start thinking about some of these topics in advance in order to optimize your time during the FB.

*Reading materials:*

WP1\_ToR\_FellowBoard1.0\_18Jan17

FB agenda (**confidential, drafted and circulated by ESR Reps**)

Meeting records of previous Fellow Boards (**confidential, circulated by ESR Reps**)

## **Excursion Czech Institute of Informatics, Robotics and Cybernetics**

**By Prof. Olga Štěpánková**

### **CIIRC, CTU in Prague ([www.ciirc.cvut.cz](http://www.ciirc.cvut.cz))**

The Czech Institute of Informatics, Robotics and Cybernetics (CIIRC CTU) is a part of the Czech Technical University in Prague (CTU). CIIRC was founded in 2013 with intention to offer solid ground for multidisciplinary research necessary for paving way of artificial intelligence and new technologies into real life applications. CIIRC builds on excellence and rich experience of its staff in number of specialized domains (e.g. automatic control and optimization, robotics, artificial intelligence, computer graphics, computer vision and machine learning, designing software systems, designing decision and diagnostic systems and their applications in medicine, energy transport, including smart homes and smart cities) as well as on its strong links with international research centres.

Main attention is currently focused on technology transfer to industry - CIIRC CTU became the centre of support for industry 4.0 and the headquarters of the National Centre for Industry 4.0. In this context robotics, machine perception, machine learning as well human computer interaction are being studied. Obviously, results of this research are relevant not only for advance of industry but domains like medicine and care can benefit from them in longer run, too. CIIRC acknowledges this perspective and two of its departments BEAT (Biomedical Engineering and Assistive Technology) and CogSys (Cognitive Systems and Neuroscience) are dedicated to biomedical engineering, assistive technologies and cognitive systems.

The INDUCT visitors will be presented some relevant results of CogSys and BEAT research and they will have a chance to get acquainted with several futuristic tools considered as well as to test them during brief hands-on exercises.

### **Program of the INDUCT visit to CIIRC**

Olga Štěpánková, Lenka Lhotská: Brief overview of biomedical engineering research at the CIIRC

Michal Vavrečka: What robots can teach us about human mind

Jaromír Doležal: Eye-tracking as a tool for memory research

Markéta Janatová et al.: Usage of computer games in rehabilitation of stability

Petr Panýrek: Robot as an assistant in a care home – one year of experience



## ***ESR presentations, recommendations (per WP)***

*Chairs: WP leaders*

*WP3: Prof. Louise Nygård, WP4: Prof. Rose-Marie Dröes, WP5: Prof. Lieve van den Block*

On Monday and Tuesday, each ESR will be asked to present an **update** on his or her PhD project. Sessions are organized per WP. Note that each ESR will have approximately **10-15 minutes** to present. Each session will be ended with a short wrap-up by the WP lead.

Apart from the update, we would like to ask each ESR to focus in their presentation on their contribution to the transversal recommendations as formulated as objectives at the start of the project:

- 1) Determining practical, cognitive and social factors to improve usability of technology;
- 2) Evaluating the effectiveness of specific contemporary technology;
- 3) Tracing facilitators and barriers for implementation of technology in dementia

In the Steering groups on Tuesday afternoon, some time will be reserved for a discussion of the transversal recommendations. These recommendations as formulated at the 4<sup>th</sup> INDUCT school will be the topic of interest during the EWGPWD meeting at Brussels the 5<sup>th</sup> of December, organized by the WP2 Training team and Alzheimer Europe.

### ***Reading materials:***

These objectives originate from Annex B of the original call H2020-MSCA-ITN-2015; see **appendix – ESR presentations** on the e-campus for a more detailed description of the transversal recommendations, and have a look at the original document (Part B) for more background information.

### ***Preparatory assignments:***

Each ESR will prepare a presentation of 10-15 minutes, including a short introduction and update of the project, with a specific focus on his or her contribution to the transversal recommendations. Make sure to bring your individual presentation to this session. Please **discuss** the contribution of your research to the transversal recommendations **with your supervisor(s)** in advance of the summer school.

Please contact the training manager Fania Dassen ([f.dassen@maastrichtuniversity](mailto:f.dassen@maastrichtuniversity)) in advance if you need anything special for your presentation besides a beamer and PowerPoint.

## 5.4 Tuesday 11<sup>th</sup> of September

### ***ESR presentations, recommendations (per WP) – continued***

*(see description and preparatory assignment on previous page)*

Chairs: WP leaders

Tuesday: WP4: Prof. Rose-Marie Dröes, WP5: Prof. Lieve van den Block

### ***ESR ‘Intercultural communication’ networking session***

*Joeke van der Molen – van Santen (ESR7)*

*Ángel C. Pinto Bruno (ESR14)*

Intercultural communication is getting more and more important nowadays, especially in cross-national projects as INDUCT. After a brief presentation, this session will bring the ESRs an opportunity to discuss their personal experiences with ‘intercultural communication’ within science.

#### ***Preparatory assignment:***

Please **reflect** on your own ‘intercultural communication’ experiences in science.

### ***Work Package Steering Groups***

Chair Overall session: Dr. Deborah Oliveira

Chair each WP groups: WP leaders

The Work Package (WP) steering group sessions aim for the WP members to meet and discuss their current developments and future plans in relation to management, research, training, personalized Career Development Plans (PCDPs), supervision, mentorship, secondments, impact, public involvement, dissemination, mid-term review and any other relevant topic(s). A report generated from these discussions will be taken by each WP leader to the Supervisor Board (SB) for an update of the management team.

#### ***Preparatory assignments:***

Please bring your Personalised Career Development Plan (PCDP), including past activities and future plans.

#### ***Mandatory reading:***

WPs Agenda 2018

ToR for the WP oversight committees (WPOCS) 10.08.16

## 5.5 Wednesday 12<sup>th</sup> of September

### *Supervisory Board*

Chairs: Prof. Martin Orrell, Dr. Deborah Oliveira

The role of the Supervisor Board (SB) is firstly to ensure that skills requirements are properly defined by closely involving the non-academic sector. Secondly, the Board will make sure that the ESRs receive the proper combination of academic, transferable skills and on-the-job training through their secondments in the non-academic sector as laid down in the ESRs' PCDPs. The SB will also enable continuous and close communications among partners within INDUCT, will promote an exchange of best practices, and will monitor the quantity and quality of the supervision of the ESR's.

In addition, the SB will make sure that the complimentary strength of the network partners is optimally exploited and that the rights and interests of people with dementia are enshrined by putting them at the heart of the research projects. They will review and adjust the recruitment strategy, network policies and training programme. Decisions within the network will be made with a simple majority vote of all network members present. Lastly the board will ensure that the output of INDUCT is fully exploited for the benefit of the European Research Area exploring the intellectual property potential of each WP at each meeting.

*The SB will be attended by the **ESR Reps.***

### *Reading materials:*

SB\_agenda

ToR of the Supervisory Board (SB) 30.06.16

Notes and minutes of previous Supervisory Board Meeting (Witten)

### ***INDUCT WHO-ADI Workshop***

**Theme:** Evidence-based policy making

**Tutors:** Anne Margriet Pot (World Health Organization) &  
Wendy Weidner (Alzheimer Disease International)

### **Program**

11.15 – 11:40: Introduction to policy making (plenary)

11:40 – 12:30: Discussion of policy briefs prepared for this workshop (subgroups)

12.30 – 13:30: Lunch

13:30 – 13:50: Exchange of learning points (plenary)

13:50 - 14:30: Analysis of existing policy briefs (subgroups)

14:30 – 14:50: Exchange of learning points (plenary)

14:50 - 15:00: closing remarks

## Description

Governments and universities are increasingly focusing on knowledge valorisation. Knowledge valorisation refers to the utilisation of scientific knowledge in practice, or more precisely, it refers to the process of the creation of societal or economic value from knowledge. Examples include the development of a medicine to treat Alzheimer's Disease or the improvement of a country's long-term care system based on results of scientific research. The term 'knowledge valorisation' is akin to the term 'innovation'. New knowledge or technologies alone are not considered as innovations; innovation only applies if new knowledge or technologies are used in practice, if they create societal or economic value. Because of this increased attention for knowledge valorisation, researchers need to think about ways to create societal or economic impact based on the research they are doing.

Therefore, it may be helpful to try and look at your own research from the perspective of policy-makers. In this workshop you will get familiar with evidence-based policy-making, analyse existing policy briefs, and write a policy brief yourself. The SUPPORT Tools for evidence-informed health Policymaking (STP) will be used to guide you. They describe how more systematic processes can be used to 1. Support evidence-informed policymaking 2. Identifying needs for research evidence in relation to three steps in policymaking processes, namely problem clarification, options framing, and implementation planning 3. Finding and assessing both systematic reviews and other types of evidence to inform these steps, and 4. Going from research evidence to decisions. These tools have been designed to help policymakers and those who support them to support evidence-informed health policymaking.

## Learning outcomes

By the end of this session, you will

1. Be familiar with the methodology of evidence-based policy making
2. Be able to critically review existing policies based on this knowledge, for example in the field of long-term care and dementia
3. Be able to formulate key messages for policy to foster for people with dementia

## *Preparatory assignments:*

- Read the literature for this workshop (see below)
- Write a policy brief based on existing research (including your own research) to identify key gaps in long-term care and dementia care in Indonesia (see Appendix **Writing a policy brief for Indonesia** on e-campus) and bring your assignment to the session.
- For practical guidance see:  
[https://www.idrc.ca/sites/default/files/idrcpolicybrieftoolkit\\_0.pdf](https://www.idrc.ca/sites/default/files/idrcpolicybrieftoolkit_0.pdf)  
(p. 38: 1-2 pages max., no summary needed, not too much detail)

*Reading materials:*

- SUPPORT Tools for evidence-informed health policymaking <https://health-policy-systems.biomedcentral.com/articles/supplements/volume-7-supplement-1>
  - SUPPORT Tools for evidence-informed health Policymaking (STP) 1: What is evidence-informed policymaking?
  - Introduction SUPPORT Tools for evidence-informed health Policymaking (STP)
  - SUPPORT Tools for evidence-informed health Policymaking (STP) 4: Using research evidence to clarify a problem
  - SUPPORT Tools for evidence-informed health Policymaking (STP) 5: Using research evidence to frame options to address a problem
  - SUPPORT Tools for Evidence-informed Policymaking in health 6: Using research evidence to address how an option will be implemented
  - SUPPORT Tools for evidence-informed health Policymaking (STP) 13: Preparing and using policy briefs to support evidence-informed policymaking



## 5.6 Thursday 1<sup>st</sup> of February

### *Dementia demographics around the world: Is the incidence of dementia really decreasing?*

*Prof. Martin Prince*

Prof. Martin Prince will talk in this interactive presentation about his work, including his important contribution to the World Alzheimer Report 2015. This report updates our estimates of the global prevalence, incidence and costs of dementia, based on systematic reviews. The report also includes a review of the evidence for and against trends in the prevalence and incidence of dementia. Almost all current projections of the coming dementia epidemic assume that age- and gender-specific prevalence of dementia will not vary over time, and that population ageing alone drives the projected increases. The prevalence of any condition is a product of its incidence and the average duration of the disease episode. Changes in either or both of these indicators could lead to changes in age-specific prevalence. One should not expect that secular trends will be the same across all world regions, or even among different population subgroups within one country. For 2015, 9.9 million new cases of dementia are estimated each year worldwide, implying one new case every 3.2 seconds. Compared to the 2012 estimates, new values represent an increased proportion of new cases arising in Asia, the Americas and Africa, while the proportion arising in Europe has fallen. Findings across the identified studies (mostly conducted in high income countries) are currently too inconsistent to reach firm and generalizable conclusions regarding underlying trends. Studies that use fixed methodology to estimate changes in dementia prevalence, incidence and mortality over time, in defined populations, are valuable and it is important that more are commissioned.

#### *Reading materials:*

Please have a look at the report and supplementary documents available at this link:

<https://www.alz.co.uk/research/world-report-2015>

### *Why psychosocial research fits into the bigger picture*

*Prof. Frans Verhey and Prof. Marjolein de Vugt*

So far, the biomedical model has been dominant in dementia research, but the progress that has been made has been lower than was hoped for some decades ago. Applying the principals of Positive Health, as proposed by Huber et al, both the biomedical and psychosocial models are highly relevant to improve the quality of

lives for people with dementia. In this session, we will discuss the strengths and weaknesses of both biomedical and the psychosocial models to dementia and how they relate to each other: what has been achieved so far, and how can both models be complementary and be bridged to one integrative view.

#### *Reading materials:*

Huber, M., Knottnerus, J. A., Green, L., van der Horst, H., Jadad, A. R., Kromhout, D., ... & Schnabel, P. (2011). How should we define health? *BMJ*, 343, d4163. Doi: 10.1136/bmj.d4163

Dröes, R. M., Chattat, R., Diaz, A., Gove, D., Graff, M., Murphy, K., ... & Roes, M. (2017). Social health and dementia: a European consensus on the operationalization of the concept and directions for research and practice. *Aging & mental health*, 21(1), 4-17. <https://doi.org/10.1080/13607863.2016.1254596>

Moniz-Cook, E., Vernooij-Dassen, M., Woods, B., Orrell, M., & Network, I. (2011). Psychosocial interventions in dementia care research: the INTERDEM manifesto. *Aging Ment Health*, 15(3), 283-90. <https://doi.org/10.1002/gps.2687>

de Vugt, M. E., & Verhey, F. R. (2013). The impact of early dementia diagnosis and intervention on informal caregivers. *Progress in neurobiology*, 110, 54-62. <https://doi.org/10.1016/j.pneurobio.2013.04.005>

#### *Funding opportunities and grant proposal writing*

*Prof. Lieve Van den Block*

The aim of the workshop is to exchange tips and tricks of grant writing and seeking funding opportunities, and learn from good and bad examples. We can discuss many different topics including: differences between bottom-up and top-down (when there is a call text) grant writing; different funding opportunities nationally and internationally; resume/CV building; the importance of analysing guides for applicants and evaluation criteria; learning from failing and from good examples; the importance of project planning, communication, and consortium building; tips and tricks in actual writing, structuring and lay-outing the proposal; and the power of mock interviews.

#### *Preparatory questions:*

To make the workshop as interactive as possible, we would like to receive your questions or expectations for this workshop in advance. You can send them to Prof. Lieve Van den Block at [lvdblock@vub.be](mailto:lvdblock@vub.be) (please put "INDUCT writing workshop" in the subject of your email).

Deadline for sending: Please send your questions and expectations around **20/8/2018**.

## ***Effective oral presentations***

*Prof. Lieve Van den Block and Dr. Aline de Vleminck*

This workshop will cover 4 general themes: 1. What is going wrong with oral presentations? 2. What are characteristics of effective presentations? 3. How to design effective presentations? and 4. How to create effective slides? The aim of this workshop is to provide researchers with some basic techniques to create structured and effective presentations for scientific conferences that will get the audience to pay attention and understand/remember the main message of your presentation.

### ***Preparatory questions/assignments:***

To make the workshop as tangible as possible and to use personal examples, we would like to receive **some examples** of your previously used slides and presentations in advance.

You can send them to Prof. Lieve Van den Block at [lvdblock@vub.be](mailto:lvdblock@vub.be) and Dr. Aline de Vleminck at [Aline.De.Vleminck@vub.be](mailto:Aline.De.Vleminck@vub.be) (please put “INDUCT effective oral presentations workshop” in the subject of your email).

Deadline for sending: Please send your examples around **20/8/2018**.

## ***Utilising event logging, ecological momentary assessment & machine learning: Implications for studies of people living with dementia and their carers***

*Prof. Maurice Mulvenna*

In this workshop, the participants will learn about the findings from studies involving people living with dementia and their caregivers, using more intensive data-based approaches. Participants will then work in groups to carry out some practical tasks and present their findings back to the group.

### ***No preparatory assignments***

## 5.7 Friday 2<sup>nd</sup> of February

### **Know yourself – Who am I as a leader? Competences, skills and surprises**

*Ms. Ilona Schumacher*

Content of interactive workshop:

- What is “Leadership”? How can I be a Leader? Do I want to be a leader?
- Communication and leadership.
- Values and leadership.
- Self-image versus the image of others / What’s feedback?
- What is my role in a conflict?

*No preparatory assignments*

### **Spread the message: Communication with the media**

*Prof. Iva Holmerová & journal editor Judita Matyášová (UK media centre)*

Judita and Iva will explain how journalists select stories. What criteria are important for journalists? What kind of information they need and why? During this workshop, you will have a unique chance to discuss with two experienced experts, who can comment description of your project and give you advice, how to present this project to the media.

*No preparatory assignments*

## 5.8 Evaluation

Your detailed feedback is crucial and helps us to ensure a high quality INDUCT training programme. All responses will be dealt with discreetly and will only be used to improve your course. Individual comments and scores cannot be traced back to you.

Please find the links to the evaluation surveys for the 4th INDUCT School below.

**Evaluation link for Monday:**

[https://maastrichtuniversity.eu.qualtrics.com/jfe/form/SV\\_4NtaiKWgyQGXMpv](https://maastrichtuniversity.eu.qualtrics.com/jfe/form/SV_4NtaiKWgyQGXMpv)

**Evaluation link for Tuesday:**

[https://maastrichtuniversity.eu.qualtrics.com/jfe/form/SV\\_50DHZhBcWQn0gVT](https://maastrichtuniversity.eu.qualtrics.com/jfe/form/SV_50DHZhBcWQn0gVT)

**Evaluation link for Wednesday:**

[https://maastrichtuniversity.eu.qualtrics.com/jfe/form/SV\\_07iHVT5zUd26vr](https://maastrichtuniversity.eu.qualtrics.com/jfe/form/SV_07iHVT5zUd26vr)

**Evaluation link for Thursday:**

[https://maastrichtuniversity.eu.qualtrics.com/jfe/form/SV\\_eRmUZR583UJaKA5](https://maastrichtuniversity.eu.qualtrics.com/jfe/form/SV_eRmUZR583UJaKA5)

**Evaluation link for Friday and general evaluation:**

[https://maastrichtuniversity.eu.qualtrics.com/jfe/form/SV\\_ezcikxALoKfSyWx](https://maastrichtuniversity.eu.qualtrics.com/jfe/form/SV_ezcikxALoKfSyWx)

## 6. Speakers, moderators and coordinators

### **Prof. Lieve Van den Block**

#### ***INDUCT speaker***

VU Brussels

[lvdblock@vub.ac.be](mailto:lvdblock@vub.ac.be)

<http://www.endoflifecare.be/persons/lieve-van-den-block>



Lieve Van den Block is Professor of Communication and Education at the Vrije Universiteit Brussel (VUB) and chair of the Ageing and Palliative Care Research Programme at the End-of-Life Care Research Group of the VUB and Ghent University in Belgium. She holds a PhD in Medical Social Sciences and a Master's degree in Clinical Psychology. Her research work focuses on national and international public health and interventional research aimed at monitoring and improving palliative and end-of-life care for older people and people with dementia. She currently coordinates the EU funded FP7 project PACE (Palliative Care for Older People) and is partner in the EU funded H2020 project INDUCT (Interdisciplinary Network for Dementia Utilising Current Technology). She has received several scientific awards for her work including the prestigious Early Researcher Award of the European Association for Palliative Care. She is editor and author of several books, and has published more than 90 papers in leading peer-reviewed journals in medicine, public health and palliative care. Her work has been supported by grants from FP7, H2020, FWO, IWT and other leading medical and health charities. She currently also chairs the Psychosocial Funding Committee at one of the major Cancer Societies in Belgium (Kom Op Tegen Kanker).

### **Dr. Fania Dassen**

#### ***INDUCT speaker***

Alzheimer Centrum Limburg

Maastricht University

[f.dassen@maastrichtuniversity.nl](mailto:f.dassen@maastrichtuniversity.nl)



Since April 2018, Fania works as Training Manager for INTERDEM Academy and INDUCT. She also coordinates outreach activities for Alzheimer Centrum Limburg in which she for instance tries to connect young and old. She recently completed her PhD degree at the Department of Clinical Psychological Science at Maastricht University, in which she studied the role and trainability of executive functioning in eating disorders and obesity, under the supervision of Prof. Jansen, Dr. Houben and Dr. Nederkoorn. Before her PhD, she completed her MSc degree in Health Care Psychology at the Radboud University Nijmegen, and specialized in developmental psychology.

## **Dr. Jaromír Doležal**

**CIIRC CTU**



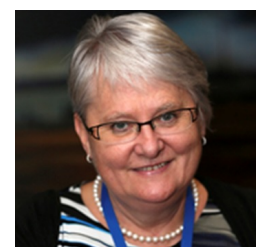
Jaromír Doležal works as a researcher at the Czech Institute of Informatics, Robotics and Cybernetics. In 2017 he graduated from the doctoral program "Theoretical Electrical Engineering" at the Faculty of Electrical Engineering, Czech Technical University in Prague with the thesis "Classification of Human motor activity from EEG". Currently, he is involved in the following projects: "Technology to monitor eye movements in a virtual reality designed for testing competencies", "Personal medical and assistance systems" and "CTU FEL - Knowledge for Prague". He is interested in biomedical signals processing and software engineering.

## **Prof. Iva Holmerová**

**INDUCT speaker**

Centre of Gerontology, Charles University

[Iva.Holmerova@gerontocentrum.cz](mailto:Iva.Holmerova@gerontocentrum.cz)



Iva Holmerová is the Chair of the Czech Alzheimer Society, which she co-founded in 1997. A practicing physician since 1981, she is qualified in General and Geriatric Medicine and also holds a PhD in Social Gerontology. She is also the Director of the Czech Centre of Gerontology (since 1992), the President of the Czech Society of Gerontology and Geriatrics (since 1997) and a committee member of the International Association of Gerontology and Geriatrics (IAGG) since 1997. She is an Associate Professor of Humanities at Charles University (Prague) and was named Visiting Professor at the University of the West of Scotland in 2014. Iva has been a Board member of Alzheimer Europe since 2008 and served as Vice-Chairperson from 2010 to 2016.

## **Dr. Markéta Janatová**

**CIIRC CTU**



Markéta Janatová graduated from the 1st Faculty of Medicine at the Charles University in Prague in 2008. Since 2010 she works at the Department of Rehabilitation Medicine of

the First Faculty of Medicine of Charles University and in the General Teaching Hospital in Prague as a medical doctor. Since 2011 she is a member of interdisciplinary team at the Joint Department of Biomedical Engineering, Czech Technical University with a specialization in development of innovative technical devices for rehabilitation. She participated in more than 30 publications and papers focused on development, validation and application of ICT solutions in diagnostics, tele-monitoring and neurorehabilitation.

### **Dr. Lenka Lhotská**

***CIIRC CTU***



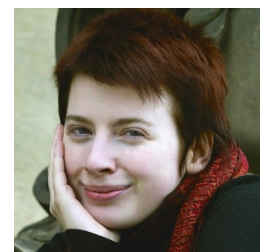
Lenka Lhotská is associate professor and head of the CogSys Department of CIIRC CTU. She is co-author of more than 100 publications (31 journal papers, 13 book chapters) in knowledge-based systems, machine learning, multi-agent systems, AI applications, and advanced biomedical signal processing. Her research interests are distributed AI, machine learning, knowledge-based systems, and applications of these methods to medical area and ambient assisted living. She has been project leader of a number of local and international R&D projects. The most relevant EU projects are IST 045 282 OLDES (Older People's e/Services at Home, 2007-9), IST -No.02696 K4Care (Knowledge-Based HomeCare eServices for an Ageing Europe, 2006-9), IST-No.045508 Netcarity (Networked Multisensor System for elderly people: health care, safety and security in home environment, 2007-2011), EU ENIAC project, No. 120228 MAS (Nanoelectronics for Mobile Ambient Assisted Living (AAL) Systems, 2010-2013), EU Operational Programme CENTRAL EUROPE project No. 3CE286P2 SPES (Supporting Patients through E-services Solutions, 2011-2014).

### **Judita Matyášová**

***Invited Speaker***

Charles University

[franzk@centrum.cz](mailto:franzk@centrum.cz)



Judita Matyášová is a Czech journalist, historian and student of the PhD program Longevity Studies in Faculty of Humanities at Charles University in Prague. She has been working 15 years for main Czech media, especially for Czech newspapers Lidove noviny. Judita writes about Czech history, culture, education and NGOs. Her PhD project is focused on the intergenerational program for teenagers, who record seniors in the Czech



Republic. Judita is a guest teacher in the Department of Journalism at Faculty of Social Studies, Charles University. She also organizes workshops for a public audience „Why media does not write about my project?“ where she explains, how a journalists work and how they choose stories for media.

### **Prof. Maurice Mulvenna**

***INDUCT Speaker***

Ulster University

[md.mulvenna@ulster.ac.uk](mailto:md.mulvenna@ulster.ac.uk)



Maurice Mulvenna is Professor of Computer Science at Ulster University. His research areas include artificial intelligence, digital interventions for health and wellbeing, and assistive technologies. He is currently involved in several international research projects, including H2020 MIDAS (Meaningful Integration of Data Analytics and Services), H2020 SenseCare (Sensor Enabled Affective Computing for Enhancing Medical Care, and UK HSC Facilitated reminiscence for people living with dementia. Arising from his research, he has published around 300 papers and served on many program committees. He is co-chair of the 32nd British Human-Computer Interaction conference in 2018, and the 31st European Cognitive Ergonomics conference in 2019. He served for three years on UK Ofcom's Advisory Committee on Older and Disabled People and currently serves on the editorial boards for several academic journals including the Journal of Enabling Technologies and JMIR Rehabilitation and Assistive Technologies. In 2014, he was elected as a Board Member of the International Society for Gerontechnology (ISG). Maurice is also a past winner of the European €100K IST Grand Prize and has won with colleagues the Best Innovation in Practice Award at the Dementia Care Awards.

### **Joeke van der Molen – van Santen (ESR7) Ángel C. Pinto Bruno (ESR14)**



Joeke is currently researching exergaming in dementia at the VUMC in Amsterdam.

Angel is currently researching internet support for informal caregivers of people with dementia at the VU in Amsterdam.



## **Dr. Deborah Oliveira**

### ***INDUCT speaker***

Institute of Mental Health

University of Nottingham

[Deborah.Deoliveira@nottingham.ac.uk](mailto:Deborah.Deoliveira@nottingham.ac.uk)



Deborah Oliveira currently works as Research Fellow (Project Manager) for INDUCT. She recently completed her PhD degree at the University of Nottingham, in which she developed and validated the 'Dementia Quality of Life Scale for Older Family Carers' (DQoL-OC). Previous to that, she completed her MSc degree at the University of Campinas, Brazil, where she also graduated as a general practitioner Nurse in 2009. Deborah has clinical experience as a Palliative Care Nurse and Community Care Nurse in Brazil. She has research experience with quality of life, family caregiving, dementia, scale development and validation, psychometrics and mixed-methods research. She is a member of the British Society of Gerontology and of INTERDEM.

## **Prof. Martin Orrell**

### ***INDUCT speaker***

Institute of Mental Health

University of Nottingham

[m.orrell@nottingham.ac.uk](mailto:m.orrell@nottingham.ac.uk)



Martin Orrell is the Director of the Institute of Mental Health, University of Nottingham, Visiting Professor at City University and Honorary Professor at the University of Liverpool. He is Chair of the Memory Services National Accreditation Panel (MSNAP) and a member of the Prime Ministers Challenge on Dementia Research Group. He has been awarded 5 major grants totaling £11 million on psychosocial interventions for dementia care and is co-applicant on a further £9 million. Moreover, he is the leader of the PRIDE project funding INTERDEM Academy. He has published over 200 academic papers and is a Board member of both INTERDEM and the International Psychogeriatric Association. In 2014 he was elected President of the European Association of Geriatric Psychiatry.

## **Petr Panýrek**

***CIIRC CTU***



Petr Panýrek graduated at the Czech Technical University in Prague in 1992 and since then he works in IT business. In 2002 he co-founded the High Tech Alliance - HIGH TECH PARK corp., he became its CEO and the head of the development team for social technologies. In this domain he gained extensive experience in direct collaboration with universities and research institutions through number of projects. Currently he is involved in creating a new platform for assistive technology, the so-called "Emotive Assistivity" - its aim is to emphasize promotion of positive emotional perception in people with the need for supervision and intensive care using modern technologies.

## **Prof. Anne Margriet Pot**

***INDUCT speaker***

World Health Organisation

[potam@who.int](mailto:potam@who.int)



Prof. Dr. A.M. (Anne Margriet) Pot is currently working at the World Health Organization (WHO) in Geneva. Her focus areas are dementia, elderly persons and long-term care. She is involved in the development of a global e-health portal for dementia and the "World Report on Healthy Aging". She is a professor of Aging and Psychology at the Department of Clinical Psychology at the Free University of Amsterdam and honorary professor in the Department of Psychology at the University of Queensland in Australia. In the past 25 years, Anne Margriet Pot has focused on improving the mental health of older people in scientific research, (post) graduate education and clinical practice. She has published around 200 national and international scientific and professional publications. In recent years her research has focused on the development of evidence-based interventions for older people and their carers and to evaluate the quality of care. She has been the initiator and executor of two national monitors, one for the quality of care for people with dementia (Monitor Woonvormen Dementia) and one for the outpatient psychiatric care for the elderly (MEMO).

## **Prof. Martin Prince**

### ***Invited Speaker***

King's College London

[martin.prince@kcl.ac.uk](mailto:martin.prince@kcl.ac.uk)



Martin Prince is Professor of Epidemiological Psychiatry/ Assistant Principal (Global Health) and Director of King's College Global Health Institute at King's College London. His work is oriented to the salience of mental and neurological disorders to health and social policy in low and middle income countries (LMIC), with a focus on ageing, dementia and other chronic diseases. He is particularly interested in health service and system responses to the challenges of population ageing. He has coordinated, since 1998 the 10/66 Dementia Research Group, a network of researchers, mainly from LMIC working together to promote more good research into dementia in those regions. The group has published 140 papers covering dementia prevalence, incidence, aetiology and impact and contributed to knowledge of public health aspects of ageing and chronic disease in LMIC.

He co-authored the Dementia UK report that informed the UK Government's National Dementia Strategy, and lead the development of the widely reported ADI World Alzheimer Reports for 2009 (prevalence and numbers), 2010 (societal cost) and 2011 (early intervention), 2013 (long term care), 2014 (modifiable risk factors), 2015 (update on prevalence, incidence and cost) and was a leading contributor to the WHO World Dementia Report 2012. He was one of three editors for the 2007 Lancet Series on Global Mental Health, and is committed to further research and advocacy to support the call for action for improved coverage of evidence-based community treatments. He coordinated the development of the WHO Mental Health Gap Action Plan (mhGAP) clinical guidelines for dementia care by non-specialists in LMIC.

## **Ms Ilona Schumacher**

### ***Invited Speaker***

Change Campus Hamburg

[ilona@schumachercoaching.de](mailto:ilona@schumachercoaching.de)



I love to work with people and I love to teach, but not in the old and common way. Everyone likes to learn about the things surrounding us and more important – about oneself. I try to give people the space and the courage to do this and together we create something new.

What I Do:

- Executive Coach and Business Sparring
- Change Manager
- Lecturer at Hamburg School Of Business Administration (HSBA)
- Lecturer at Business School Potsdam and Medical School Hamburg for Industrial Psychology and Systemics Thinking
- Author of the book: „Leadership und Management im 21. Jahrhundert“, Springer Verlag, Summer 2014
- November 2017: Founder of Change Campus, Pop-up Business School (Systemic Coaching and Consulting Education).

## **Prof. Olga Štěpánková**

### ***INDUCT speaker***

CIIRC Czech Technical University

[stepanko@fel.cvut.cz](mailto:stepanko@fel.cvut.cz)



Olga Stepankova graduated from the Faculty of Mathematics and Physics of Charles University and she successfully concluded her postgraduate studies in the field of mathematical logic in 1981. Since 1988 she has been working at the Faculty of Electrical Engineering of the Czech Technical University in Prague, which awarded her with the title full professor in 1998 and made her responsible for the master study program Biomedical Engineering and Informatics. From 2016, she is the head of the BEAT Department at CIIRC CTU. Her research dedicated to data mining, machine learning, artificial intelligence, development of man-machine systems and of assistive technologies offered her number of opportunities to cooperate with international teams through research projects, often in the role of local coordinator (e.g. Solomon, CoGain, OLDES, SPES, MAS). She is an author of more than 150 publications including 20 journal papers, co-editor of 3 monographs in English, 6 in Czech and co-author of 2 textbooks.

## **Dr. Michal Vavrečka**

### ***CIIRC CTU***



Michal Vavrečka is senior researcher at the CIIRC, CTU. He gained the MA degree in Psychology at the Faculty of Arts at the Masaryk University in Brno (2005) and Ph.D. degree in General Psychology at Faculty of Social Studies (2008). His [doctoral thesis](#) was dedicated to cognitive semantics and its application in the area of spatial navigation. His research interests cover psychology, methodology, experimental

psychology, neuropsychology, cognitive neuroscience and artificial intelligence. Currently, he focuses on development of multimodal representations; he develops multimodal architectures for grounding symbols in the area of spatial navigation. He is (co-)author of more than 20 papers, 1 book chapter. He has participated in several international projects (e.g. EU projects TRADR and CloPeMa) and has been principal investigator of several national projects focused on e.g. methods of human intelligence simulation, cognitive semantics in models of spatial relations representation.

### **Prof. Frans Verhey**

#### ***INDUCT speaker***

Alzheimer Center Limburg

Dept of Psychiatry and Neuropsychology, Maastricht University

[f.verhey@maastrichtuniversity.nl](mailto:f.verhey@maastrichtuniversity.nl)



Frans Verhey is appointed as a professor of Old Age Psychiatry and Neuropsychiatry at the University of Maastricht, the Netherlands. He is the director of the Alzheimer Center Limburg. He actively participates in the board of several international networks, such as the European AD Consortium, and INTERDEM. The topics of his current research projects include: predictors of conversion of mild cognitively impaired elderly into Alzheimer's Disease; the course and risk factors of neuropsychiatric disturbances in dementia; psychosocial interventions; predictors of vascular dementia, health economy studies. He is the (co-)author of more than 400 (inter)national articles. He has supervised more than 35 PhD students.

### **Dr. Aline De Vleminck**

#### ***INDUCT Speaker***

VU Brussels

[Aline.De.Vleminck@vub.be](mailto:Aline.De.Vleminck@vub.be)



Aline De Vleminck (born 1986) is a post-doctoral researcher working at the End-of-Life Care Research Group, Vrije Universiteit Brussel (VUB) & Ghent University. She studied Sociology at the Vrije Universiteit Brussel (VUB) and obtained her Master's degree in 2010. In 2011, she started to work as a junior researcher at the End-of-Life Care Research Group, Ghent University & Vrije Universiteit Brussel (VUB). Aline conducted research on advance care planning in general practice, supervised by Prof. dr. Robert Vanderstichele, Prof. dr. Luc Deliens, Prof. dr. Koen Pardon and Prof. dr. Dirk Houttekier. This study was



part of the “Flanders study to Improve End-of-Life Care and Evaluation Tools” (FLIECE project) which was supported by a grant from the Flemish government agency for Innovation by Science and Technology (IWT). In 2015, she was selected for a Fulbright Scholarship Award. She was granted by the Fulbright Scholar Program to conduct research on hospice care for dementia patients and a qualitative study on advance care planning in patients with young-onset dementia. She conducted this research at the National Palliative Care Research Center, located at Icahn School of Medicine in New York. Aline De Vleminck currently works at the End-of-Life Care Research Group as a post-doctoral researcher on a two-year follow-up project of her PhD dissertation regarding the initiation of advance care planning in general practice. In 2017, she obtained her postdoctoral fellowship from FWO, Flanders (Fonds voor Wetenschappelijk Onderzoek).

### **Prof. Marjolein de Vugt**

#### ***INDUCT speaker***

Alzheimer Center Limburg

Maastricht University

[m.devugt@maastrichtuniversity.nl](mailto:m.devugt@maastrichtuniversity.nl)



Marjolein de Vugt is a professor of psychosocial innovations in dementia at the successful research school Mental Health and Neurosciences at Maastricht University. She is co-director of the Alzheimer Center Limburg and working as a health care psychologist in the memory clinic of the academic hospital Maastricht. Her research focuses on psychosocial aspects of dementia with a special interest in ehealth interventions to support caregivers. She is also a board member of the European network on research into early detection and timely intervention in dementia (INTERDEM).

### **Wendy Weidner**

#### ***INDUCT speaker***

Alzheimer's Disease International

[w.weidner@alz.co.uk](mailto:w.weidner@alz.co.uk)



As Research and Policy Project Lead for Alzheimer's Disease International (ADI), Wendy leads on ADI's participation in the STRiDE (Strengthening responses to dementia in developing countries) project in partnership with the London School of Economics and Political Sciences (LSE) Personal Social Services Research Unit (PSSRU), universities and Alzheimer associations in seven countries in Asia, Africa, and the Americas. Her role also includes a focus on other research that ADI is involved in, including developing research webinars to provide a public interface between Alzheimer Associations and professionals

providing dementia research in either biopsychosocial interventions or clinical trials and liaising with ADI's Medical and Scientific Advisory Panel.

Before joining ADI, Wendy was the Business Development Manager for Dementia UK, where she led nationally on developing Admiral Nurse services, working closely with commissioners and other care providers to design new services that provided holistic and family-centred dementia care, while also providing social return on investment. Wendy also headed up a Dementia Pilot Project that looked at the impact of reminiscing with people with dementia. Wendy studied development economics and previously worked in project and service development and evaluation throughout Africa with the non-profit sector.

## **Other roles during the 4th INDUCT School**

### **Dr. Nancy Nicolson**

#### ***Ombudsman***

Dept of Psychiatry and Neuropsychology, Maastricht University

[n.nicolson@maastrichtuniversity.nl](mailto:n.nicolson@maastrichtuniversity.nl)



Nancy Nicolson, Associate Professor in Psychiatry & Neuropsychology, has a BA in Human Biology (Stanford) and a PhD in Behavioral Biology (Harvard). Her research focuses on the psychobiology of stress in aging, affective and fatigue disorders, and responses to stress in relation to childhood trauma and adversity in adults and adolescents, using experience sampling and salivary hormone assessment to study real life as well as laboratory settings. In her role as INDUCT Ombudsman, she will offer confidential and informal assistance to help resolve any work-related conflicts or grievances, and to improve the overall quality of the working environment, with special attention to the ESRs.

#### ***Senior chairs (staff/speakers):***

The INDUCT School will be chaired by senior speakers. The senior chair appointed for each particular day will chair each session, introduce each speaker, and carry out the welcome and closure. He/she will make an inventory of the expectations of the participants regarding the content of the day, and whether these have been met.



*Practical assistance (staff):*

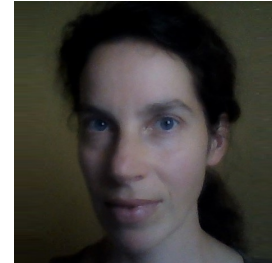
The local coordination team and Training Manager will be the first point of call for issues regarding registration, accommodation, venue, technological equipment, coffee/lunch etc. They will also monitor the time for the activities.

**Ms Iff Kolářová**

***Local Administrative (and universal) support***

Charles University

[fishes@centrum.cz](mailto:fishes@centrum.cz); +420 777 888 426



Iva iff Kolářová (to be called "iff", please, in order to prevent confusion with Iva Holmerová) had been always interested in many fields so she finally chose to study social work and eventually ended up being a long-term assistant of all kinds. For twenty years, she specialized on a direct personal assistance to people living with dementia and other intellectual dis/abilities and their families, having other jobs with a supportive character. She is currently working as a technical and administrative support for Centre of Expertise in Longevity and Long-term care. Her greatest hobby is correcting spines.

**Ms Ann Gibbons**

***Management (WP1) Administrative support***

University of Nottingham

[Ann.Gibbons@nottingham.ac.uk](mailto:Ann.Gibbons@nottingham.ac.uk)

**Ms Danielle Moens**

***Training (WP2) Administrative support***

Maastricht University

[d.moens@maastrichtuniversity.nl](mailto:d.moens@maastrichtuniversity.nl)

## 7. ESRs



**Yvette Vermeer – ESR1 (UCL-UK)**

[y.vermeer@ucl.ac.uk](mailto:y.vermeer@ucl.ac.uk)

***Empowerment and surveillance for people with dementia***

*Supervised by: Prof. Paul Higgs, Dr. Georgina Charlesworth (University College London)*

**Secondment 1 to:** Karolinska Institute

**Secondment 2 to:** Alzheimer Netherlands



**Sébastien Libert – ESR2 (UCL-UK)**

[s.libert@ucl.ac.uk](mailto:s.libert@ucl.ac.uk)

***Brain training as an exclusionary process in people with dementia***

*Supervised by: Prof. Paul Higgs, Dr. Georgina Charlesworth (University College London)*

**Secondment 1 to:** Alzheimer Europe

**Secondment 2 to:** IDES / INTRAS



**Sophie Gaber – ESR3 (KI-SE)**

[sophie.gaber@gmail.com](mailto:sophie.gaber@gmail.com)

***Everyday technology in public space meets people with dementia***

*Supervised by: Prof. Louise Nygård, Dr. Camilla Malinowksy (Karolinska Institutet)*

**Secondment 1 to:** University of Witten

**Secondment 2 to:** ADI



**Sarah Wallcook – ESR4 (KI-SE)**

[sarahwallcook@gmail.com](mailto:sarahwallcook@gmail.com)

***Access and ability to use everyday technology among older adults with and without dementia across different countries***

*Supervised by: Prof. Louise Nygård, Dr. Camilla Malinowsky (Karolinska Institutet)*

**Secondment 1 to:** WFOT

**Secondment 2 to:** University College London



**Harleen Rai – ESR5 (UoN-UK)**

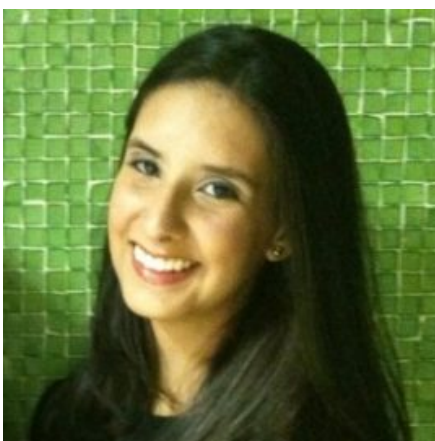
[Harleen.Rai@nottingham.ac.uk](mailto:Harleen.Rai@nottingham.ac.uk)

***Adapting Cognitive Stimulation Therapy (CST) to a tablet system***

*Supervised by: Prof. Martin Orrell, Prof. Justine Schneider (University of Nottingham)*

**Secondment 1 to:** IDES / INTRAS

**Secondment 2 to:** ADI Indonesia



**Aline Cavalcanti Barroso – ESR6 (UoN-UK)**

[Aline.Cavalcantibarroso@nottingham.ac.uk](mailto:Aline.Cavalcantibarroso@nottingham.ac.uk)

***Using computer technology to enable arts and crafts for people with dementia in care homes***

*Supervised by: Prof. Justine Schneider, Prof. Martin Orrell (University of Nottingham)*

**Secondment 1 to:** VU Medical Center

**Secondment 2 to:** Karolinska Institutet



**Joeke van der Molen – van Santen – ESR7 (VUMC-NL)**

[joekevansanten@gmail.com](mailto:joekevansanten@gmail.com)

***Exergaming in dementia***

*Supervised by: Prof. Rose-Marie Dröes, Dr. Franka Meiland (VU Medical Center)*

**Secondment 1 to:** Silverfit

**Secondment 2 to:** IDES / INTRAS



**Floriana Mangiaracina – ESR8 (VUMC-NL)**

[floriana.mangiaracina@gmail.com](mailto:floriana.mangiaracina@gmail.com)

***Using the iPad for self-management, health promotion activities, and social inclusion***

*Supervised by: Prof. Rose-Marie Dröes, Dr. Franka Meiland (VU Medical Center)*

**Secondment 1 to:** MindTech

**Secondment 2 to:** EuMedianet



**Sara Bartels – ESR9 (MU-NL)**

[sara.bartels@maastrichtuniversity.nl](mailto:sara.bartels@maastrichtuniversity.nl)

***E-monitoring in people with early dementia***

*Supervised by: Prof. Frans Verhey, Dr. Marjolein de Vugt (Maastricht University)*

**Secondment 1 to:** Karolinska Institute

**Secondment 2 to:** EUMedianet



**Hannah Christie – ESR10 (MU-NL)**

[Hannah.christie@maastrichtuniversity.nl](mailto:Hannah.christie@maastrichtuniversity.nl)

***Digital engagement to enhance social inclusion and reduce stigma in dementia***

*Supervised by: Prof. Frans Verhey, Dr. Marjolein de Vugt (Maastricht University)*

**Secondment 1 to:** MindTech

**Secondment 2 to:** Betawerk



**Rose Miranda – ESR11 (VUB-BE)**

[rar.miranda912@gmail.com](mailto:rar.miranda912@gmail.com)

***The evaluation of palliative care as a complex health technology for people with dementia in nursing homes***

*Supervised by: Prof. Lieve van den Block, Dr. Lara Pivodic (VU Brussels)*

**Secondment 1 to:** University of Hertfordshire

**Secondment 2 to:** University of Hertfordshire



**Annelien van Dael – ESR12 (VUB-BE)**

[annelienvandael@gmail.com](mailto:annelienvandael@gmail.com)

***The effectiveness of advance care planning (ACP) as a complex health technology for people with dementia in nursing homes***

*Supervised by: Prof. Lieve van den Block, Dr. Lara Pivodic (VU Brussels)*

**Secondment 1 to:** University of Hertfordshire

**Secondment 2 to:** University of Hertfordshire





**Kate Shiells – ESR13 (UK-CZ)**

[kshiells84@hotmail.com](mailto:kshiells84@hotmail.com)

***Care programmes and ICT support in different countries***

*Supervised by: Prof. Iva Holmerová (Charles University)*

**Secondment 1 to:** VU Brussels

**Secondment 2 to:** IDES / INTRAS



**Ángel C. Pinto Bruno – ESR14 (VU-NL)**

[acpintobr@gmail.com](mailto:acpintobr@gmail.com)

***Internet support for informal caregivers of people with dementia***

*Supervised by: Prof. Annemieke van Straten (VU University), Prof. Anne Margriet Pot (WHO), Dr. Annet Kleiboer (VU University)*

**Secondment 1 to:** WHO

**Secondment 2 to:** University of Nottingham



**Angie Alejandra Diaz Baquero - ESR15  
(IDES/INTRAS-Spain)**

***Evaluation of GRADIOR, a cognitive rehabilitation application for dementia***

*Supervised by: Prof. Manuel Franco, Dr. J. Antonio García Casal*

**Secondment 1 to:** University of Nottingham

## 8. INDUCT and INTERDEM Academy delegates

*Delegates coming to the 4<sup>th</sup> INDUCT School are listed below in alphabetical order. Please note that this overview is subject to changes.*

No.	Name	Role	Affiliations	Present on:
1	Dr. Aline de Vleminck	Trainer	VU Brussels <a href="mailto:Aline.De.Vleminck@vub.be">Aline.De.Vleminck@vub.be</a>	Thur
2	Prof. Anne Margriet Pot	Partner/speaker	World Health Organization <a href="mailto:potam@who.int">potam@who.int</a>	Mon - Wed
3	Ms. Ann Gibbons	Admin for WP1 Management	University of Nottingham <a href="mailto:Ann.Gibbons@nottingham.ac.uk">Ann.Gibbons@nottingham.ac.uk</a>	Sun - Wed
4	Prof. Annemieke van Straten	Supervisor ESR14	VU University <a href="mailto:a.van.straten@vu.nl">a.van.straten@vu.nl</a>	Mon - Wed
5	Dr. Camilla Malinowsky	Supervisor ESR3 + ESR4	Karolinska Institutet <a href="mailto:Camilla.Malinowsky@ki.se">Camilla.Malinowsky@ki.se</a>	Mon – Wed (lunch)
6	Candelas Leal, MBA	Partner	IDES <a href="mailto:investigacion8@intrus.es">investigacion8@intrus.es</a>	Sun - Fri
7	Dr. Deborah Oliveira	Project Manager	University of Nottingham <a href="mailto:Deborah.Deoliveira@nottingham.ac.uk">Deborah.Deoliveira@nottingham.ac.uk</a>	Mon - Wed
8	Dr. Fania Dassen	Training Manager	Maastricht University <a href="mailto:f.dassen@maastrichtuniversity.nl">f.dassen@maastrichtuniversity.nl</a>	Sun - Friday
9	Prof. Frances Bunn	Partner	University of Hertfordshire <a href="mailto:f.bunn@herts.ac.uk">f.bunn@herts.ac.uk</a>	Mon – Wed (lunch)
10	Dr. Franka Meiland	Supervisor ESR7 + ESR8	Amsterdam UMC <a href="mailto:fj.meiland@vumc.nl">fj.meiland@vumc.nl</a>	Sun - Tues

<b>11</b>	Prof. Frans Verhey	Supervisor ESR9 + ESR10 Training Coordinator	Maastricht University <a href="mailto:f.verhey@maastrichtuniversity.nl">f.verhey@maastrichtuniversity.nl</a>	Mon - Thur
<b>12</b>	Ms. Ilona Schumacher	Trainer	Change Campus Hamburg <a href="mailto:ilona@schumachercoaching.de">ilona@schumachercoaching.de</a>	Thur (evening) - Fri
<b>13</b>	Prof. Iva Holmerová	Speaker, Local Coordinator	Charles University <a href="mailto:iva.holmerova@gerontocentrum.cz">iva.holmerova@gerontocentrum.cz</a>	Sun - Fri
<b>14</b>	Ms. Iva iff Kolářová	Local Coordinator	Charles University <a href="mailto:fishes@centrum.cz">fishes@centrum.cz</a>	Sun - Fri
<b>15</b>	Dr. Jennifer Lynch	Partner	University of Hertfordshire <a href="mailto:j.lynch5@herts.ac.uk">j.lynch5@herts.ac.uk</a>	Mon – Wed (lunch)
<b>16</b>	Drs. Judita Matyasova	Speaker	Charles University <a href="mailto:franzk@centrum.cz">franzk@centrum.cz</a>	Mon-Tues and Friday
<b>17</b>	Prof. Lieve van den Block	Supervisor ESR11 + ESR12 WP5 leader Secondment Coordinator	VU Brussels <a href="mailto:lvdblock@vub.ac.be">lvdblock@vub.ac.be</a>	Tues - Thur
<b>18</b>	Prof. Louise Nygård	Supervisor ESR3 + ESR4 WP4 leader	Karolinska Institutet <a href="mailto:louise.nygard@ki.se">louise.nygard@ki.se</a>	Mon – Wed (lunch)
<b>19</b>	Prof. Manuel Franco	Supervisor ESR15	IDES / INTRAS <a href="mailto:mfm@intras.es">mfm@intras.es</a>	Mon – Wed (lunch)
<b>20</b>	Prof. Marjolein de Vugt	Supervisor ESR9 + ESR10	Maastricht University <a href="mailto:m.devugt@maastrichtuniversity.nl">m.devugt@maastrichtuniversity.nl</a>	Mon - Thur
<b>21</b>	Prof. Martin Orrell	Supervisor ESR5 + ESR6 Project Coordinator	University of Nottingham <a href="mailto:M.Orrell@nottingham.ac.uk">M.Orrell@nottingham.ac.uk</a>	Mon - Wed



<b>22</b>	Prof. Martin Prince	Speaker	King's College London <a href="mailto:martin.prince@kcl.ac.uk">martin.prince@kcl.ac.uk</a>	Wed - Fri
<b>23</b>	Prof. Maurice Mulvenna	Speaker	Ulster University <a href="mailto:md.mulvenna@ulster.ac.uk">md.mulvenna@ulster.ac.uk</a>	Mon - Thur
<b>24</b>	Dr. Nancy Nicolson	Ombudsman	Maastricht University <a href="mailto:n.nicolson@maastrichtuniversity.nl">n.nicolson@maastrichtuniversity.nl</a>	Sun – Tues (morning)
<b>25</b>	Prof. Olga Stepankova	Partner	Charles University and CTU <a href="mailto:stepanko@fel.cvut.cz">stepanko@fel.cvut.cz</a>	Mon - Fri
<b>26</b>	Prof. Paul Higgs	Supervisor ESR1 + ESR2 WP3 leader	University College London <a href="mailto:p.higgs@ucl.ac.uk">p.higgs@ucl.ac.uk</a>	Tues (afternoon) – Wed (afternoon)
<b>27</b>	Prof. Rose-Marie Dröes	Supervisor ESR7 + ESR8 Research Coordinator	VU Medical Centre <a href="mailto:rm.droes@vumc.nl">rm.droes@vumc.nl</a>	Sun – Wed/Thur
<b>28</b>	Ms. Wendy Weidner	Partner/speaker	Alzheimer's Disease International <a href="mailto:w.weidner@alz.co.uk">w.weidner@alz.co.uk</a>	Tues (afternoon) - Wed
<b>29</b>	Drs. Angelique Gruters	INTERDEM Academy researcher	Maastricht University <a href="mailto:angelique.gruters@maastrichtuniversity.nl">angelique.gruters@maastrichtuniversity.nl</a>	Wed - Thur
<b>30</b>	Drs. Mignon Schichel	INTERDEM Academy researcher	Maastricht University <a href="mailto:mignon.schichel@maastrichtuniversity.nl">mignon.schichel@maastrichtuniversity.nl</a>	Wed - Thur
<b>31</b>	Dr. Janet Vroomen - MacNeil	INTERDEM Academy researcher	University of Amsterdam <a href="mailto:j.l.macneil-vroomen@amc.uva.nl">j.l.macneil-vroomen@amc.uva.nl</a>	Wed - Thur
<b>32</b>	Drs. Niels Janssen	INTERDEM Academy researcher	Maastricht University <a href="mailto:niels.janssen@maastrichtuniversity.nl">niels.janssen@maastrichtuniversity.nl</a>	Wed-Thur