



## 2<sup>nd</sup> INDUCT School

### Course book (draft)

25 – 29 September 2017

Salamanca and Zamora, Spain





**PROGRAM 2nd INDUCT School 2017 – Salamanca & Zamora, Spain**

Time	Sun 24/09/17	Mon 25/09/17	Tue 26/09/17	Wed 27/09/17	Thu 28/09/17	Fri 29/09/17
		CREA Centre (Salamanca)	CREA Centre (Salamanca)	With INTERDEM Academy IBIP Lab (Zamora)	Symposium with INTERDEM Academy University of Salamanca	Symposium with INTERDEM Academy University of Salamanca
Morning	Arrival	Coffee / tea and registration at 08:45	Coffee / tea and registration at 08:45	Coffee / tea and registration at 09:00	Coffee / tea and registration at 08:30	Coffee / tea at 08:45
		Welcome	Welcome	Welcome	Welcome	Welcome
		EWGPWD Think Tank	Preparation for Mid-term review at 09:30	Publish your research: Ask the editor	How to transform research projects into start ups	Using technology for psychosocial interventions in dementia: research
			WP Steering Groups at 10:00	Prof Martin Orrell	Prof Emilio Corchado	
		Coffee / tea at 11:00	Coffee / tea at 11:00	Coffee / tea and refreshments at 11:00	Coffee / tea at 11:00	Coffee / tea at 11:00
		Fellow Board (ESRs only)	WP Steering Groups	Exploitation of our results: commerce and funds	Chance-based designs in dementia care	Using technology for psychosocial interventions in dementia: companies
			Mr Pablo Sánchez and Candelas Leal, MBA	Prof Bob Woods		
After Noon		Lunch at 13:00	Lunch at 13:00	IBIP usability lab workshops at 12:30	Lunch at 13:00	Lunch at 13:00
	ESR project updates	WP Steering Groups – wrap up	Travel from IBIP to care home – late lunch	Poster session	Clinical trials a using technology in dementia: European projects	
		ESR networking session				
	Coffee / tea at 16:00	Coffee / tea at 15:30	Care home site visit at 16:00	Coffee / tea at 16:00	Close for symposium and poster prizes at 16:00	
	CREA site visits	Supervisory Board		Accessibility and opportunities of technology for dementia care	Close and certificate ceremony for INDUCT and INTERDEM Academy at 16:30	
		Close at 18:00	Close at 17:45	Close at 18:00	Close at 17:30	16:30
Evening	Social activities TBD	Social activities TBD	Social activities TBD	Social activities TBD	Social activities TBD	Departure



# Content

<b>1.</b>	<b>Welcome address</b>	<b>1</b>
<b>2.</b>	<b>Practical information</b>	<b>2</b>
2.1	Registration and accommodation for ESRs	
2.2	Registration and accommodation for speakers, beneficiaries and 2 <sup>nd</sup> -level partners	
2.3	Locations	
2.4	Travel	
2.5	Executive office	
<b>3.</b>	<b>Course information</b>	<b>7</b>
3.1	General information about the INDUCT Schools	
3.2	Aims of the 2 <sup>nd</sup> INDUCT School	
<b>4.</b>	<b>Programme</b>	<b>10</b>
4.1	Sunday 24 <sup>th</sup> of September	
4.2	Monday 25 <sup>th</sup> of September	
4.3	Tuesday 26 <sup>th</sup> of September	
4.4	Wednesday 27 <sup>th</sup> of September	
4.5	Thursday 28 <sup>th</sup> of September	
4.6	Friday 29 <sup>th</sup> of September	
<b>5.</b>	<b>Activities, assignments, and literature</b>	<b>18</b>
5.1	Preparation	
5.2	General assignments	
5.3	Monday 25 <sup>th</sup> of September	
5.4	Tuesday 26 <sup>th</sup> of September	
5.5	Wednesday 27 <sup>th</sup> of September	
5.6	Thursday 28 <sup>th</sup> of September	
5.7	Friday 29 <sup>th</sup> of September	
5.8	Evaluation	
<b>6.</b>	<b>Speakers, moderators and coordinators</b>	<b>30</b>
<b>7.</b>	<b>ESRs</b>	<b>39</b>
<b>8.</b>	<b>INDUCT delegates</b>	<b>44</b>

## 1. Welcome address

We are pleased to host the 2<sup>nd</sup> INDUCT School, organized by IDES / INTRAS, CREA, and the University of Salamanca. We would like to thank everyone who has been involved in drafting the programme and arranging the School, as well as the invited speakers and all other presenters as well as INDUCT partners for their contributions.

Lastly we would like to express our gratitude to the INTERDEM and INTERDEM Academy networks, and the European Commission for their continued support. We look forward to an interesting, stimulating meeting and hope you will enjoy your time in Spain.

### ***2<sup>nd</sup> INDUCT School - Local Coordinators***

*Prof Manuel Franco, J. Antonio García Casal (DClinPsy), Candelas Leal, Esther Parra, Martina Vanova, Ángel C. Pinto Bruno*

### ***INDUCT Training team (WP2)***

*Professor Frans Verhey, Dr Marjolein de Vugt, Dr Inge Klinkenberg*

### ***INDUCT Management team (WP1)***

*Professor Martin Orrell, Dr Deborah Oliveira*

## 2. Practical information

### 2.1 Registration and accommodation for ESRs

**Registration includes:**

- Admission to the event and social activities for the whole week
- Lunch
- Coffee / tea and refreshments

**Registration does not include:**

- Travel
- Accommodation at the IBIS Salamanca hotel
- Dinner on evenings when we will not have any social activities

These expenses should be paid from your own local training budgets. Questions can be directed to Deborah Oliveira: [Deborah.Deoliveira@nottingham.ac.uk](mailto:Deborah.Deoliveira@nottingham.ac.uk).

Martina and Angel have reserved rooms for the ESRs at the **IBIS Salamanca hotel**. Of course ESRs are free to book accommodation elsewhere.

- Check-in Sunday 24 September, checkout Friday 29 September (if you want to arrive earlier or stay longer, please arrange this with the hotel yourself)
- Located in the centre of Salamanca
- 57.60 euros per night for an individual room with 1 double bed (including breakfast and taxes)
- 64.20 euros per night for a double/shared room with 1 double bed and 1 single bed (including breakfast and taxes)

**IBIS Salamanca Centro (hotel for ESRs)**

Calle la Marina 15-19, Esquina de otumba y la Albuera

37001 Salamanca, Spain

(+34) 923 27 23 80 / [H3672-GM@accor.com](mailto:H3672-GM@accor.com)

<http://www.accorhotels.com/gb/hotel-3672-ibis-salamanca/index.shtml>

## **2.2 Registration and accommodation for speakers, beneficiaries and 2<sup>nd</sup>-level partners**

### **Registration includes:**

- Admission to the event and social activities on the day(s) you have registered
- Lunch
- Coffee / tea and refreshments

### **Registration does not include:**

- Travel (to be arranged by yourself)
- Dinner on evenings when we will not have any social activities

Speakers at the event will be reimbursed for their travel and accommodation expenses by the training institute (Maastricht University). Questions can be directed to Dr Inge Klinkenberg: [inge.klinkenberg@maastrichtuniversity.nl](mailto:inge.klinkenberg@maastrichtuniversity.nl).

Beneficiaries should use their locally held INDUCT budget in order to pay for travel and stay for the INDUCT School(s).

2<sup>nd</sup>-level partners will be reimbursed for their travel and accommodation expenses by the management institute (University of Nottingham). Questions can be directed to Dr Deborah Oliveira:

[Deborah.Deoliveira@nottingham.ac.uk](mailto:Deborah.Deoliveira@nottingham.ac.uk)

### **Hospedería Fonseca (speakers, beneficiaries and partners)**

Calle Fonseca 4,

37002 Salamanca, Spain

(+34) 923 294 570

<http://www.usal.es/node/4297> (website in Spanish)

## **2.3 Locations**

### **Venue Monday 25 and Tuesday 26 September**

*CRE Alzheimer Centre*

Calle Cordel de Merinas de Chamberí 117

37008 Salamanca, Spain

(+34) 923 285 700

[http://www.crealzheimer.es/crealzheimer\\_01/index.htm](http://www.crealzheimer.es/crealzheimer_01/index.htm)



### **Venue Wednesday 27 September**

*IDES - IBIP LaB*

Ctra. La Hiniesta 137

49024 Zamora, Spain

(+34) 983 399 633

<http://ides.es/living-lab>

### **Venue Thursday 28 and Friday 29 September**

*University of Salamanca (historical building, paraninfo)*

[www.usal.es](http://www.usal.es)

<http://www.salamancacard.com/en/salamanca-card/servicios-incluidos/museos-y-monumentos/universidad-de-salamanca>

*The locations of social activities will be communicated later.*

*We are looking into arranging transport between venues.*

## **2.4 Travel**

**Option A - From Europe to Salamanca by plane:** it is best to book a flight to Madrid airport (Aldolfo Suarez-Barajas). Arriving at Madrid airport, you have to take into account in what terminal you have landed.

### **From Madrid airport to railway station:**

*Terminal 1 (mainly low cost flights) and Terminal 2 (most of the European companies):*

Catch the tube (number 8 though there is just one) (every 20 minutes): from airport to Nuevos Ministerios (end stop). And then you must catch the tube number 10 to the north from Nuevos Ministerios to Chamartin railstation (north direction). From Airport to Chamartin railstation takes you around 40 minutes.

*Terminal 4 (mainly Iberia flights):*

Catch the train (call Cercanias train). Be careful, you must not catch the tube here. The Cercanias Train will go to the Chamartin Station after three stops. It will take you 10 minutes. Price of train or tube from Madrid airport to Chamartin is around 3 euros.

### **From the railway station (Chamartin) to Salamanca:**

You have three options, depending on what is best for you. Take into account that the flights can be delayed and you will need extra time to carry your luggage. Our advice is to buy the ticket in the railway station, because at the ticket office you can find information about the next trains. Your choices are as follows:

#### *From Chamartin Rail station to Salamanca:*

The fastest and most comfortable choice, but you need to book the Alvia train (it takes one hour and 45 minutes). Other trains will be a bad choice.

#### *From Chamartin rail Station to Zamora:*

It takes you one hour and half and you must catch the Alvia train. In this case, the organization will pick you up for going from Zamora to Salamanca (40 minutes by car).

#### *From Chamartin Rail Station to Valladolid:*

It takes you just one hour (55 minutes) and you must catch the Alvia, or AVE (faster). In this case, we can pick you up for going from Valladolid to Salamanca (55 minutes by car).

### **Option B - From Europe to Valladolid:**

There are a few companies (mainly Ryanair) flying to Valladolid directly, but it will be easier through Barcelona (there are a few flights from Barcelona to Valladolid and so you should go to Barcelona and after to Valladolid).

We will pick you up in the Valladolid airport with a taxi for going from airport to Salamanca (it takes one hour).

At last, and taking into account that our advice is to buy the train ticket in the railway station you only have to think about the flights and after we will try to arrange a shuttle from the airport to the Salamanca hotels. The information on public transport has been explained here just in case we are unable to come pick you up. It's true that it's possible to catch a bus from Madrid to Salamanca but it takes three hours and it's not very comfortable (the train is better).

## 2.5 Executive Office

In case of questions or requests, please contact:

***Ms Esther Parra – Secretary for the technological symposium***

IDES / INTRAS

Phone: +34 651 573 536

E-mail: [epv@intras.es](mailto:epv@intras.es)

***Dr Inge Klinkenberg – INDUCT Training Manager***

Alzheimer Center Limburg, Maastricht University

Phone: +31 (0)43 388 4098 / +31 (0)6 43831544

E-mail: [inge.klinkenberg@maastrichtuniversity.nl](mailto:inge.klinkenberg@maastrichtuniversity.nl)

Skype: ingeklinkenbergum

***Prof Frans Verhey – INDUCT Training Coordinator***

Alzheimer Center Limburg, Maastricht University

E-mail: [f.verhey@maastrichtuniversity.nl](mailto:f.verhey@maastrichtuniversity.nl)

## 3. Course information

### 3.1 General information about the INDUCT Schools

Within INDUCT there will be five INDUCT Schools of 5 days / 6 ECTS / 120 hours each including preparation time. These Schools are compulsory for the 15 INDUCT ESRs, and will also be partly attended by INTERDEM Academy researchers. Representatives of the European Working Group of People with Dementia and speakers and participants from academic and non-academic partners will have invited talks in each session. ESRs will present their own work to their peers and senior colleagues.

By bringing together the expertise of private, public and voluntary sectors, each INDUCT School will thus offer a unique, network-wide programme. Training seminars will focus on Dementia care-specific research skills (Level 1) as well as Transferable skills (Level 2).

**Dementia care-specific research skills training (Level 1).** ESRs need to be aware of challenges regarding people with dementia as advisors to their projects, participant recruitment, informed consent, communication styles, and the logistics of working with people with dementia. Secondly, to pursue excellence, INDUCT ESRs need to understand the methodological aspects of quantitative and qualitative evaluation of care and support interventions. Thirdly, they need to be equipped with a cutting edge overview of the latest developments regarding technological innovations and applications for dementia care and support.

**Transferable skills training (Level 2).** These sessions will prepare our ESRs for future employment in academia, health care, industry or the voluntary sector. An all-round training consisting of seminars on entrepreneurship, (inter)national dementia policies, leadership qualities, cross-cultural challenges, international collaboration, implementation of care innovations and knowledge dissemination will be offered.

As a proof of excellence, all ESRs will receive a certificate showing attendance of events organized within INDUCT. An evaluation questionnaire will be distributed at the end of each event allowing statistics to be collected relating to the attendance outside / inside the network to ensure openness, transparency and accountability of the quality evaluations and to provide input to improve upcoming INDUCT Schools.

## 3.2 Aims of the 2<sup>nd</sup> INDUCT School

The 2<sup>nd</sup> INDUCT School will be a great opportunity to:

1. get introduced to the expertise of the INDUCT partners (**Training sessions**)
2. discuss current developments and future plans (**INDUCT Project meetings**)
3. network with fellow ESRs, as well as the academic, industrial and health and social care partners in the network (**Social and networking events**)
4. attain insight into new advances and perspectives on technologies for dementia care (**Joint Technology Symposium with the University of Salamanca**)

Four types of activities will be provided within the week.

### Training sessions

Training sessions are to offer a grand introduction to INDUCT's expertise when it comes to research methodology (academic and industry partners), key projects within or outside the consortium (academic and industry partners), or dementia policies and dissemination of your research (dementia, health and social care organisations). For the training sessions on Wednesday, Thursday and Friday we will be joined by researchers from the INTERDEM Academy network. Training sessions can consist of Lectures or Workshops.

Lectures aim to highlight key projects within or outside of INDUCT and are set up to be interactive. The speakers will actively seek the feedback, input and thoughts of the participants attending the School. Workshops will include a variety of work forms; e.g., small working groups that will jointly present the outcomes of their assignments at the end of each Workshop in order to receive expert as well as peer feedback.

### INDUCT Project seminars

INDUCT Project seminars are meant to inform and discuss current developments and future plans with regards to:

- Management, roles and communication
- Research projects
- Impact and dissemination
- Training, supervision, and Personalised Career Development Plans (PCDPs)
- Secondments

### **Social and networking events**

Social and networking events are meant to get to know one another in a relatively more informal way. More information on these will follow soon.

## 4. Programme

### 4.1 Sunday 24<sup>th</sup> of September

#### *Evening*

**Social activities to be announced**

### 4.2 Monday 25<sup>th</sup> of September

**Location:** *El Centro de Referencia Estatal de Atención a Personas con Enfermedad de Alzheimer y otras Demencias (CREA), Salamanca*



#### *Morning*

08:45 - 09:15 Coffee / tea and registration

09:15 - 09:30 **Welcome and program plan**

09:30 - 11:00 **EWGPWD Think Tank**

EWGPWD members: Chris Roberts, Nina Baláčková, and Idalina Aguiar

Carers: Jayne Goodrick, Iva Coelho and Nélida Aguiar

11:00 - 11:30 Coffee / tea

11:30 - 13:00 **Fellow board (ESRs only)**

13:00 - 14:30 Lunch at the venue

#### *Afternoon*

14:30 - 16:00 **ESR project updates** by Sarah Wallcook (ESR4), Harleen Rai (ESR5), and Joeke van der Molen-van Santen (ESR7)

16:00 - 16:30 Coffee / tea

16:30 - 18:00 **CREA site visits**

18:00 - 18:15 **Close**

#### *Evening*

**Social activities to be announced**

## 4.3 Tuesday 26<sup>th</sup> of September

**Location:** *El Centro de Referencia Estatal de Atención a Personas con Enfermedad de Alzheimer y otras Demencias (CREA), Salamanca*



### **Morning**

08:45 - 09:15	Coffee / tea and registration
09:15 - 09:30	<b>Welcome</b>
09:30 - 10:00	<b>Preparation for Mid-term review</b> by Dr Deborah De Oliveira
10:00 - 11:00	<b>WP Steering Groups</b>
11:00 - 11:30	Coffee / tea
11:30 - 13:00	<b>WP Steering Groups (continued)</b>
13:00 - 14:00	Lunch at the venue

### **Afternoon**

14:00 - 14:30	<b>WP Steering Groups (wrap up)</b>
14:30 - 15:30	<b>ESR networking session</b> by Hannah Christie (ESR10) and Annelien van Dael (ESR12)
15:30 - 16:00	Coffee / tea
16:00 - 17:45	<b>Supervisory Board (open to ESR reps)</b> by Prof Martin Orrell and Dr Deborah Oliveira
17:45 - 18:00	<b>Close</b>

### **Evening**

**Social activities to be announced**





#### 4.4 Wednesday 27<sup>th</sup> of September with INTERDEM Academy

**Location:** Iberian Institute in Psycho-Sciences (IBIP) Lab, Zamora

##### **Morning**

08:00 - 09:00	Travel from Salamanca to Zamora
09:00 - 09:15	Coffee / tea and registration
09:15 - 09:30	<b>Welcome</b> by Dr Inge Klinkenberg
09:30 - 10:30	<b>Publish your research: Ask the editor</b> Prof Martin Orrell
10:30 - 11:00	Coffee / tea and refreshments
11:00 - 12:30	<b>Exploitation of our results: practical knowledge about commerce and funds</b> Mr Pablo Sánchez and Candelas Leal, MBA
12:30 - 14:00	<b>IBIP usability lab workshops</b>

##### **Afternoon**

14:00 - 16:00	Travel from IBIP to care home – late lunch
16:00 - 18:00	<b>Care home site visit</b>
18:00 - 18:15	<b>Close</b>

##### **Evening**

**Social activities to be announced**



**28 – 29 September 2017**

***Symposium on Technologies for Dementia Care:***

***New Advances and Perspectives***

with INTERDEM Academy and the University of Salamanca

#### **4.5 Thursday 28<sup>th</sup> of September**

***Location:*** University of Salamanca, Paraninfo

##### ***Morning***

08:30 - 09:15	Coffee / tea and registration
09:15 - 09:30	<b><i>Welcome</i></b> by the Coordinator of the INDUCT Project and ViceDean of the Salamanca University
09:30 - 11:00	<b><i>How to transform research projects into startups in the European market</i></b>  Prof Emilio Corchado (University of Salamanca, Spain)
11:00 - 11:30	Coffee / tea
11:30 - 13:00	<b><i>Chance-based designs in dementia care</i></b>  Prof Bob Woods (Bangor University, United Kingdom)
13:00 - 14:30	Lunch

##### ***Afternoon***

14:30 - 16:00	<b><i>Poster session; project presentations of INDUCT</i></b>
16:00 - 16:30	Coffee / tea

16:30 - 18:00	<b><i>Accessibility and opportunities of technology for dementia care</i></b> chaired by Julio Feroso (Chair of Neurologist, Director of Alzheimer Master, University of Salamanca)
16:30 - 17:00	<b><i>eWALL – Home Caring Environment</i></b> Hermie Hermens (Twente University, The Netherlands)
17:00 - 17:30	<b><i>Improving adoption of technology in dementia by patient/user engagement</i></b> Prof. Rose-Marie Dröes (VU University medical center, The Netherlands)
17:30 - 18:00	<b><i>Discussion</i></b>



## 4.6 Friday 29<sup>th</sup> of September

**Location:** University of Salamanca, Paraninfo

### **Morning**

08:45 - 09:15 Coffee / tea

09:15 - 09:30 **Welcome**

**09:30 - 11:00** ***Using Technology for Psychosocial Interventions in Dementia: Research*** chaired by Cristina Genaro (Chair of the Psychology School, University of Salamanca)

09:30 - 10:00 ***Robots for avoiding social isolation in dementia***  
Prof Miguel Salichs (Chair of the Systems Engineering and Automation Dep., Technological School, Carlos III University, Madrid, Spain)

10:00 - 10:30 ***Echobutler: A new psychostimulation tablet software for preventing cognitive impairment***  
Prof Cristina Botella (Chair of the Psychology School, Jaume I University, Castellon, Spain)

10:30 - 11:00 ***Monitoring and new approaches for psychosocial interventions in a Day Hospital for Dementia***  
Sergio Ariño (Head of the Geriatrician Department, Granollers Hospital, Spain)

11:00 - 11:30 Coffee / tea

<b>11:30 - 13:00</b>	<b><i>Using Technology for Psychosocial Interventions in Dementia: Companies</i></b>
11:30 - 12:00	<p><b><i>INDUCT project: Using data analytics to enhance the evaluation of digital health interventions: learning from INDUCT Dementia research</i></b></p> <p>Floriana Mangiaracina (INDUCT ESR8, VU University Medical Centre, the Netherlands) and Dr Jennifer Martin, (MindTech, United Kingdom)</p>
12:00 - 12:30	<p><b><i>Technologies to support community-dwelling persons with dementia: A position paper by INTERDEM's Assistive Technology Taskforce</i></b></p> <p>Henriëtte van der Roest (VU University Medical Centre, The Netherlands) and Manuel A. Franco (Salamanca University, Spain)</p>
12:30 - 13:00	<p><b><i>EVIDENT 3 app: A new tool to improve the lifestyles in the general population: Is it possible to implement this tool for the elderly?</i></b></p> <p>José Ignacio Recio-Rodriguez (Primary Care Research Unit, The Alamedilla Health Center, Salamanca, Spain)</p>
13:00 - 14:30	Lunch

## ***Afternoon***

### ***14:30 - 16:00 Clinical Trials and research initiatives using technology in dementia (European Projects)***

#### ***14:30 - 15:00 INDUCT project: Clinical Trial for Gradior validation for people with dementia (rehabilitation cognitive software)***

Martina Vanova (INDUCT ESR15), J. Antonio García Casal (DClinPsy), Prof Manuel A. Franco (Salamanca University)

#### ***15:00 - 15:30 Long Lasting Memories: Physical and cognitive training in MCI using technology***

Fátima González Palau and Prof Manuel A. Franco (Head of Psychiatric Department, University Rio Hortega Hospital and Zamora Hospital, Valladolid, Spain)

#### ***15:30 - 16:00 Speaker(s) to be announced***

#### ***16:00 - 16:30 Close for symposium and poster prizes***

#### ***16:30 - 18:00 Close for INDUCT ESRs and INTERDEM Academy***

Wrap up discussions, close, evaluation, and certificate ceremony

## 5. Activities, assignments and literature

### 5.1 Preparation

Below you will find an overview of the content of the sessions, how to prepare and what to read in advance.

Please note that there are preparatory questions as well as preparatory assignments. **Preparatory questions** are meant take stock of your research needs, experience and background, which will enable the speakers to tailor the content of their seminars. **Preparatory assignments** are specific tasks that require you to bring something to for you to work on during the seminar– this can be an elevator pitch, a lay summary of your research, etc.

There is also mandatory reading as well as suggested reading materials. **Mandatory reading** implies that you should have read these papers carefully ahead of the session. **Suggested reading** is meant for those of you that would like to have more in-depth information about the subject of a particular seminar.

You are encouraged to submit these questions and assignments, as well as to read the literature well before the start of the School. Please send these to [inge.klinkenberg@maastrichtuniversity.nl](mailto:inge.klinkenberg@maastrichtuniversity.nl), however, please note that there are three exceptions:

- Questions for Ombudsman Nancy Nicolson: you can get in touch with her directly [n.nicolson@maastrichtuniversity.nl](mailto:n.nicolson@maastrichtuniversity.nl)) or +31 6 8324 5387;
- The preparatory questions for the session of mr Pablo Sanchez and Candelas Leal: you can send your answers to them directly [psp@intras.es](mailto:psp@intras.es) and [investigacion8@intras.es](mailto:investigacion8@intras.es);
- The poster abstracts – you can send these directly to Esther Parra: [epv@intras.es](mailto:epv@intras.es).

The deadline for submission of preparatory assignments and questions is set on **Friday 25 August 23.59PM CET**. Please get in touch with the Training Manager in case you are unable to meet this deadline.

In addition, some of the speakers have requested that you bring your laptop to the School. Bringing your smart phones, and/or tablet could be helpful as well.

The course book, literature, and any other relevant information can be found on the 2<sup>nd</sup> INDUCT School e-campus. **Please keep a close eye on it, as it will be updated regularly:**

[https://server12.np.unimaas.nl/mhens/div1/induct2\\_e\\_campus\\_2017/](https://server12.np.unimaas.nl/mhens/div1/induct2_e_campus_2017/)

Password: *CastillaLeon2017*

## 5.2 General assignments

### *Formal assessment and credits for the 2<sup>nd</sup> INDUCT School*

Prof Louise Nygard of Karolinksa Institutet (KI-SE) has shared her concerns about the fact that previous INDUCT training events – i.e., the POSADEM e-learning module *“Living with dementia: Personal perspectives”* and the 1<sup>st</sup> INDUCT School – did not include a pass-fail statement and therefore do not count at KI-SE as credits in the postgraduate education. For the two ESRs at KI-SE this means that they will – on top of these Schools – need to do additional course work to get sufficient formalized credits.

On the basis of these considerations we have decided to offer the possibility of a more formal evaluation of (parts of) the POSADEM module and the INDUCT Schools to allow the ESRs that need such credits to benefit more from the Schools.

For ESRs that wish to complete such a formalized examination, please send an e-mail to the Training Manager [inge.klinkenberg@maastrichtuniversity.nl](mailto:inge.klinkenberg@maastrichtuniversity.nl). Please specify for which training event you would like to receive a formal assessment, i.e. for the POSADEM e-learning module and/or the 2<sup>nd</sup> INDUCT School. Both of these examinations will require you to write a short reflection piece. For the 2<sup>nd</sup> INDUCT School, an assessment of the quality of your poster presentation might be part of this assessment. Most likely, you should also be prepared to pay some tax fees to the University of Salamanca for administrative duties for giving you university credits. Unfortunately we will not be able to offer an assignment for the 1<sup>st</sup> INDUCT School.

After sending the e-mail, you will receive more information about the content and format of the assessment(s) and deadlines (around November – December 2017).



Please note that although the INDUCT Training management team will do whatever is in their means to assist ESRs in the acquisition of formal credits for our training events, no rights may be derived from this publication. ESRs are advised to consult with their host institutions on local legislations and regulations for the attainment of formal credits.

### *Availability of Ombudsman during the School*

*Here is a message from INDUCT Ombudsman Nancy Nicolson.*

ESRs, I will attend the 2<sup>nd</sup> INDUCT School on Monday and Tuesday. Please let me know beforehand if there are specific concerns you think might be useful to talk with me about, as a group. Although we have not scheduled a separate group meeting with the Ombudsman this time, I will stop in during the last half hour of your Fellow Board meeting, in case anything has come up that you think might benefit from my input. If you have questions or issues you would prefer to discuss with me individually, that's always possible; just contact me and we'll make a separate appointment. In either case - group or individual - these discussions will remain confidential unless you request otherwise.

You can send me an e-mail ([n.nicolson@maastrichtuniversity.nl](mailto:n.nicolson@maastrichtuniversity.nl)) and also contact me during the School (+31 6 8324 5387). As always, I'm available throughout the year for telephone or Skype consultations.

*Here is a message from Training Manager Inge Klinkenberg.*

If you would like to speak individually and confidentially with our Ombudsman Nancy, it is advisable to do so during:

- CREA site visits (Monday afternoon, but should not be your first choice)
- Monday evening (free)
- ESR networking session (Tuesday afternoon)

*Mandatory reading:*

INDUCT Ombudsman role description.

### 5.3 Monday 25<sup>th</sup> of September

#### *EWGPWD Think Tank*

EWGPWD members: Chris Roberts, Nina Baláčková, and Idalina Aguiar

Carers: Jayne Goodrick, Iva Coelho, and Nélida Aguiar

The aim of the seminar is to share perspectives and advice from the EWGPWD on challenges the ESRs are experiencing within their projects and how to turn these into opportunities. By the end of the seminar they will have gathered advice from the members of the EWGPWD and identified potential solutions to the challenges presented. Discussions are to take place in 3 Work Package groups (with 1 EWGPWD member assigned) and there will be a plenary wrap up at the end.

#### *Preparatory assignment:*

ESRs will prepare an “ESR project summary” for the EWGPWD detailing:

1. where they currently are in their projects
2. given the challenge they have chosen for their WP, what specific practical issues and difficulties they are facing in their project. E.g., if the theme is recruitment, they could f.i. describe what their recruitment aim is (e.g. 100 participants in 1 year), how the recruitment for their studies is going so far (30 participants in 4 months) and what they would like to ask the EWGPWD in order to alleviate the issue in the future.

#### **Please keep in mind:**

- Max 500 – 1000 words / 1-2 A4
- Using bullet points and big font size to improve readability
- Include a recent picture of yourself
- Send it to Inge

#### *Suggested reading:*

EWGPWD Think Tank Challenges per WP

DEEP guidelines on how to write dementia friendly materials:

<http://dementiavoices.org.uk/resources/deep-guides/>

### **Fellow board**

Chair: Representative ESRs

Support (if necessary): Dr Deborah Oliveira, Dr Nancy Nicolson

The Fellow Board (FB) aims to give ESRs the opportunity to discuss progress, on-going issues, opportunities, etc. You will all have 1,5 hour for this meeting. The agenda for meeting will be decided by yourselves prior to the School. Deborah Oliveira will be available for any questions related to project management. Ombudsman Nancy Nicolson will be available in case you need to discuss certain concerns with her as a group.

#### *Preparatory assignments:*

**For ESR Reps:** please prepare the agenda for the FB and bring any relevant documents for the meeting. The ToR and meeting record of the 1<sup>st</sup> FB will be provided by the training team. Representative ESRs are responsible for putting it together prior to the School to take place.

**For other ESRs:** please have a look at the FB agenda (provided by your reps separately), ToR and the meeting record containing notes made during the first FB. It would be advisable to already start thinking about some of these topics in advance in order to optimize your time during the FB.

#### *Mandatory reading:*

FB agenda (**confidential, to be drafted and circulated by ESR Reps**)

WP1\_ToR\_FellowBoard1.0\_18Jan17

Meeting record 10.01.17 – Fellow Board

### **ESR project updates**

Sarah Wallcook (ESR4), Harleen Rai (ESR5), Joeke van der Molen-van Santen (ESR7)

This meeting is meant for ESRs to update each other on the current status of their projects and exchange advice. In this interactive session, we aim to identify common topics and exchange offers and needs relating to knowledge, skills and experience.

#### *Preparatory assignment:*

We would like to ask each ESR to prepare a short update (using the template you can find in the PDF repository on the e-campus) on their key achievements and non-confidential challenges / struggles / worries / concerns / problems in their projects. These can include but are not limited to: ideology, training, methodology,

recruitment, publication/dissemination, secondments. Also think about where you are time wise with regard to these topics (picking from: *Done, Doing, Up Next*). Be concise, and use key words or short sentences rather than writing entire paragraphs.

**Please fill out the template and send it to Inge before the deadline. Also bring a printout with you during the session.** This will serve as input for hive minding solutions during the session.

*There is no reading required for this seminar.*

### **CREA site visits**

We will have a tour through CREA, and you will have the opportunity to engage with people with dementia within the context of several psychosocial services that are offered in the center.

*Here is an overview of all services (in Spanish):*

[http://www.crealzheimer.es/crealzheimer\\_01/terapias\\_no\\_farmacologicas/index.htm](http://www.crealzheimer.es/crealzheimer_01/terapias_no_farmacologicas/index.htm)

*There is no preparation or reading required for this seminar.*

## **5.4 Tuesday 26<sup>th</sup> of September**

### ***Preparation for Mid-term review***

Dr Deborah De Oliveira

The INDUCT Mid Term Review (MTR) will take place during the 3<sup>rd</sup> INDUCT School in Witten, on Tuesday 30 January 2018. The MTR is a crucial event for the project and needs to be attended by at least one member of each Second Level Partner, Supervisors and ESRs. The aim of the MTR is to assess the fulfillment of all aspects (scientific, training, management, networking, etc.) described in the Annex I- Description of the Action of the Grant agreement.

This session will go into how we can prepare for the MTR.

*Preparatory assignment:*

Please read carefully the document provided about preparation for Mid-Term review and bring questions for discussion during WP Steering Groups / Fellow Board / Supervisory Board.

*Mandatory reading:*

Informal guidelines for the Mid- Term Review meeting

***Work Package Steering Groups***

Chair Overall session: Dr Deborah Oliveira

Chair each WP groups: WP leaders

The Work Package (WP) steering group sessions aim for the WP members to meet and discuss their current developments and future plans in relation to management, research, training, personalized Career Development Plans (PCDPs), supervision, mentorship, secondments, impact, public involvement, dissemination, mid-term review and any other relevant topic(s). A report generated from these discussions will be taken by each WP leader to the Supervisor Board (SB) for an update of the management team.

*Preparatory assignments:*

Please bring your Personalised Career Development Plan (PCDP) and your Individual Impact Framework (developed in the past School), including past activities and future plans.

Members of the EWGPWD will attend the WP SGs to give you advice on your projects in relation to the entire WP theme. Please prepare by starting to think about recent developments (training, research and secondment), how your project is working towards the WP theme, how your project development relates to the other projects within your WP, any theoretical/methodological you may have at this stage, and future plans you have within your project which you would like to discuss with the EWGPWD members.

You will need to explain what your project is about to the EWGPWD members on the day, so might be helpful to write a 300-word lay summary of your project using the DEEP guidelines and/or write down a few questions on what you need help or advice on and bring these to the 2<sup>nd</sup> School. You do not need to submit these to the Training manager or to the people with dementia ahead of the School. However, it is advisable that you work on these in advance so that you can make sure your project description and questions are provided in lay language, which will make it easier for you to explain these during the session.

*Mandatory reading:*

WPs Agenda Salamanca 2017

ToR for the WP oversight committees (WPOCS) 10.08.16

*Suggested reading:*

DEEP guidelines on how to write dementia friendly materials:  
<http://dementiavoices.org.uk/resources/deep-guides/>

### ***ESR networking session***

Hannah Christie (ESR10) and Annelien van Dael (ESR12)

This will be an open session that is meant to give you an opportunity to talk with the INDUCT partners about any topic(s) you feel need to be discussed: Upcoming secondments, project brainstorming, career advice... Don't be shy and get networking!

*Preparatory assignment:*

Please use this time wisely, prepare some questions and plan carefully which partners outside of your Work Package you definitely need to speak with during this INDUCT school. You will find an overview of INDUCT delegates at the end of this course book.

*There is no reading required for this seminar.*

### ***Supervisory Board***

Chair: Prof Martin Orrell

Dr Deborah Oliveira

The role of the Supervisor Board (SB) is firstly to ensure that skills requirements are properly defined by closely involving the non-academic sector. Secondly, the Board will make sure that the ESRs receive the proper combination of academic, transferable skills and on-the-job training through their secondments in the non-academic sector as laid down in the ESRs' PCDPs. The SB will also enable continuous and close communications among partners within INDUCT, will promote an exchange of best practices, and will monitor the quantity and quality of the supervision of the ESR's.

In addition, the SB will make sure that the complimentary strength of the network partners is optimally exploited and that the rights and interests of people with dementia are enshrined by putting them at the heart of the research projects. They will review and adjust the recruitment strategy, network policies and training programme. Decisions within the network will be made with a simple majority vote of all network members present. Lastly the board will ensure that the output of

INDUCT is fully exploited for the benefit of the European Research Area exploring the intellectual property potential of each WP at each meeting.

*The SB will be attended by the ESR Reps.*

*Mandatory reading:*

SB agenda Salamanca 2017

ToR of the Supervisory Board (SB) 30.06.16

Supervisory Board Winterschool Maastricht 12 January 2017 (minutes)

Meeting between Martin-Jean-Nicole 1 Aug 2017

*There are no preparatory assignments for this seminar (other than reading relevant documents).*

## **5.5 Wednesday 27<sup>th</sup> of September**

***Publish your research: Ask the editor***

Prof Martin Orrell

Martin Orrell set up the journal 'Ageing Mental Health' in 1995. In this workshop he will share his extensive experiences and perspectives of an editor, reviewer and author of academic papers.

*Preparatory assignment:*

Participants are encouraged to bring along one-page outlines for any paper which they are working on as a vehicle for discussion.

*There is no reading required for this seminar.*

***Exploitation of our results: practical knowledge about commerce and funds***

Mr Pablo Sánchez and Candelas Leal, MBA

During this training session we will try to make a brief resume about patents and commercialization of ideas and products linked to INDUCT items, and about different call for proposals in order to continue the different basic and applied research activities began on the framework of this action.

*Preparatory questions:*

Please submit your answers to the following questions by sending them to Pablo directly [psp@intras.es](mailto:psp@intras.es), with Candelas copied in ([investigacion8@intras.es](mailto:investigacion8@intras.es)).

- Do you have any experience in commercialization activities?
- Do you have any experience in European projects?
- Which are your expectations of this practical workshop?
- In which area of commercialization and European projects do you want to learn something?
- Do you have any knowledge about patents and registration of IT products?
- Is this workshop important for you?

*Suggested reading:*

Please have a look at these documents and links:

<https://ec.europa.eu/programmes/horizon2020/en/background-material>

Fact Sheet IP Management in H2020 MSCAs

***IBIP usability lab workshops***

During the usability lab workshop at IBIP, you will have the opportunity to use different technologies, seeing older people with and without cognitive impairment working at the memory clinic and having the opportunity to exchange with them.

Technologies and programmes that can be experienced:

- GRADIOR
- Affect recognition rehabilitation
- Robot for upper limbs rehabilitation combined with cognitive rehabilitation
- Ehcobutler (socio stimulation programme)
- DISCOVER (online carers psychoeducation programme)
- Exergaming (WII based physical activity programme)
- Usability lab

*There is no preparation or reading required for this seminar.*



### **Care home site visit**

We will visit a care home at Villaralbo (5km. from Zamora):

<https://www.residenciasantorcuato.es/> You will have the opportunity to chat and exchange with care home residents, to see the installations and reality of a Spanish care home, and the services offered to older people.

*There is no preparation or reading required for this seminar.*

## **5.6 Thursday 28<sup>th</sup> of September**

### **Poster session**

Every attender to the symposium can submit one abstract for presenting one poster. The topics will be about uses of technology for caring for people with dementia.

#### *Preparatory assignment:*

Please submit a poster abstract to the secretary of the symposium Esther Parra [epv@intras.es](mailto:epv@intras.es). You can find a template for this purpose in the repository on the e-campus entitled "Literature PDFs".

In addition, please note that on the basis of your submitted abstract you are required to create a poster, have it printed, and bring it along with you to the poster session during the School! You can find the INDUCT poster template in the literature repository.

*Information on the other sessions for Thursday will follow soon.*

*Other than for the poster session, there is no preparation or reading required for any of the other sessions taking place on Thursday.*

## **5.7 Friday 29<sup>th</sup> of September**

*Information on the other sessions for Friday will follow soon. There is no preparation or reading required for Friday's sessions.*

## **5.8 Evaluation**

The 2<sup>nd</sup> INDUCT School will also be evaluated. Your detailed feedback is crucial and helps us to ensure a high quality INDUCT training programme.

All responses will be dealt with discreetly and will only be used to improve your course. In addition, after the INDUCT School your feedback will be sent back to the speakers anonymously - individual comments and scores cannot be traced back to you.

*The links to the evaluation surveys for the 2<sup>nd</sup> INDUCT School will be generated soon.*

## 6. Speakers, moderators and coordinators

### **Chris Roberts**

#### ***INDUCT speaker***

European Working Group of People with Dementia  
Alzheimer Europe  
Rue Dicks 14  
L-1417 Luxembourg  
Luxemburg  
[info@alzheimer-europe.org](mailto:info@alzheimer-europe.org)



Chris Roberts is 55 years old and is from Wales. He was diagnosed with mixed dementia (Alzheimer's type and vascular dementia) in early 2012 but has not let this diagnosis get in the way of leading a full life. As an internationally known dementia campaigner, he spends most of his time promoting and providing education to others about dementia. He regularly gives talks on what it's like to live with dementia and contributes to various social media platforms. He believes in dementia rights, inclusion, co-production and the promotion of better services for everyone living with dementia. Chris joined the EWGPWD and was elected as Vice Chair in 2016.

### **Nina Baláčková**

#### ***INDUCT speaker***

European Working Group of People with Dementia  
Alzheimer Europe  
Rue Dicks 14  
L-1417 Luxembourg  
Luxemburg  
[info@alzheimer-europe.org](mailto:info@alzheimer-europe.org)



Nina Baláčková was born in 1958 in Prague, Czechoslovakia, where she has lived all her life. She studied at the Economics School and has worked as an accountant. Nina was diagnosed with Alzheimer's disease in 2007. Shortly thereafter, she decided to help publicize information about dementia to more people. She is now a frequent public speaker about her life with dementia. Nina joined the EWGPWD in October 2012 and was elected as Vice Chairperson on 12 April 2013. Nina was nominated by the *Czech Alzheimer's Society*.

## **Idalina Aguiar**

***INDUCT speaker***

European Working Group of People with Dementia  
Alzheimer Europe  
Rue Dicks 14  
L-1417 Luxembourg  
Luxemburg  
[info@alzheimer-europe.org](mailto:info@alzheimer-europe.org)



Idalina Aguiar was born in 1940 in Madeira, a Portuguese Island. She was a group leader during several years, at international and national organizations like TW, Snuker, etc, having the opportunity to travel, one of the things she most values. She was diagnosed with Alzheimer's disease in 2012 and since then, she and her family participate in different activities of Delegation of Madeira of Alzheimer Portugal. With their daughter Nélida, they have had an approach to the disease that differs from society in general, they are of the opinion that a balance between drugs and complementary therapies is ideal. Together try to combat the stigma created against dementia. Idalina was nominated by Alzheimer Portugal, joining EWGPWD in 2016. She feels this is an opportunity to put her skills in the service of other people with dementia and to be an example that a person with dementia can be an active member of society.



## **Sarah Wallcook (ESR4), Harleen Rai (ESR5), and Joeke van der Molen – van Santen (ESR7)**

Sarah is carrying out her project at Karolinska Institutet, on the interplay between older adults and people with dementia as users of technology in different environments/contexts. Harleen is employed at the University of Nottingham where she will develop methods for adapting Cognitive Stimulation Therapy to a computer interface and to produce translated Spanish and Dutch versions. Joeke is currently researching exergaming in dementia at the VUMC in Amsterdam.

**Deborah Oliveira – PhD, MSc, BSc, RN**

***INDUCT speaker***

Institute of Mental Health  
The University of Nottingham  
Innovation Park, Triumph Road  
Nottingham, NG7 2TU  
United Kingdom

[Deborah.Deoliveira@nottingham.ac.uk](mailto:Deborah.Deoliveira@nottingham.ac.uk)



Deborah Oliveira currently works as Research Fellow (Project Manager) for INDUCT. She recently completed her PhD degree at the University of Nottingham, in which she developed and validated the 'Dementia Quality of Life Scale for Older Family Carers' (DQoL-OC). Previous to that, she completed her MSc degree at the University of Campinas, Brazil, where she also graduated as a general practitioner Nurse in 2009. Deborah has clinical experience as a Palliative Care Nurse and Community Care Nurse in Brazil. She has research experience with quality of life, family caregiving, dementia, scale development and validation, psychometrics and mixed-methods research. She is a member of the British Society of Gerontology and of INTERDEM.



**Hannah Christie (ESR10),  
Annelien van Dael (ESR12)**



Hannah is carrying out her project at Maastricht University on social support technology in dementia. Annelien is working on the topic of advance care planning at the VUB in Brussels.

## **Prof Martin Orrell**

### ***INDUCT speaker***

Institute of Mental Health  
The University of Nottingham  
Innovation Park, Triumph Road  
Nottingham, NG7 2TU  
United Kingdom  
[m.orrell@nottingham.ac.uk](mailto:m.orrell@nottingham.ac.uk)



Martin Orrell is the Director of the Institute of Mental Health, University of Nottingham, Visiting Professor at City University and Honorary Professor at the University of Liverpool. He is Chair of the Memory Services National Accreditation Panel (MSNAP) and a member of the Prime Ministers Challenge on Dementia Research Group. He has been awarded 5 major grants totaling £11 million on psychosocial interventions for dementia care and is co-applicant on a further £9 million. Moreover, he is the leader of the PRIDE project funding INTERDEM Academy. He has published over 200 academic papers and is a Board member of both INTERDEM and the International Psychogeriatric Association. In 2014 he was elected President of the European Association of Geriatric Psychiatry.

## **Mr Pablo Sánchez**

### ***INDUCT speaker***

I+D y Empleo Serviconsulting S.L.  
C/ Santa Lucía 19, 1º Valladolid  
Spain  
[psp@intras.es](mailto:psp@intras.es)



Pablo Sánchez is the Executive Manager of I+D y Empleo Serviconsulting S.L. (IDES, spin-off enterprise of INTRAS Foundation). He is President of the Cluster SIVI, a four helix cluster in which there are more than 40 organizations from academic background, IT businesses, third sector NGOs and companies, and Public administration. At this moment is working in 6 IT projects linked to dementia in European Funds (Horizon 2020 and ETC) and National Funds (with ERDF Funds).

## **Ms Candelas Leal, MBA**

### ***INDUCT speaker***

Fundación INTRAS  
C/ Santa Lucía 19, 1º Valladolid  
Spain  
[investigacion8@intras.es](mailto:investigacion8@intras.es)

Candelas Leal holds a degree in Economics from the University of Valladolid, with a Master in Business Administration from the University of Leon. She is a certified financial advisor from the European Financial Planning Association (EPFA) since December 2008. Prior to joining INTRAS Foundation, Candelas worked as a public servant in the local government of Castilla y León, involved in the planning of the annual management plans of the Regional Public Hospitals. She has also worked in the financial management of INTERREG and CERLER projects. Candelas is currently part of INTRAS Foundation specialising in project management and business analysis.

## **Prof Bob Woods**

### ***External speaker***

Dementia Services Development Centre (DSDC)  
DSDC Wales, Bangor University  
Ardudwy, Normal Site, Holyhead Road  
Bangor, LL57 2PZ  
United Kingdom  
[b.woods@bangor.ac.uk](mailto:b.woods@bangor.ac.uk)



Bob Woods has been a practicing clinical psychologist working with older people for over 35 years with academic appointments at the Institute of Psychiatry and University College in London. Bob Woods has been Professor of Clinical Psychology of Older People at Bangor University since 1996, and head of Bangor's Institute of Medical & Social Care Research since 2008. His current research primarily concerns the development and evaluation of therapeutic approaches for people with dementia and their caregivers. He is co-Director of the Dementia Services Development Centre Wales, and a member of both the Medical and Scientific Advisory Panels of Alzheimer's Europe and Alzheimer's Disease International.

*ESRs, you will have the opportunity to have lunch with Prof Woods and ask him any questions that you may have on the basis of his session.*



## **Prof Ir Hermie J. Hermens**

### ***External speaker***

Dept of Biomedical Signals and Systems (BSS)  
Telemedicine Cluster  
University of Twente  
P.O. Box 217  
7500 AE Enschede  
The Netherlands  
[h.j.hermens@utwente.nl](mailto:h.j.hermens@utwente.nl)

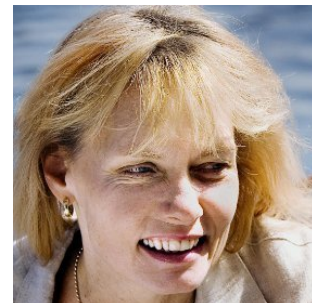


Prof. Dr. Ir. Hermie J. Hermens studied biomedical engineering at the University of Twente, then became head of the research group at Roessingh, Centre for Rehabilitation. He did his PhD on surface EMG, became professor in Neuromuscular Control (2001) and later (2010) professor in Telemedicine. He is (co) author of over 280 peer reviewed publications and his work was cited over 13000 times (H-index 55). He coordinated three successfully completed European projects (Seniam, Crest, and Impulse), is coordinator of the European project COUCH, and co-acquired and participated in over 25 other European projects. His present research is focused on combining Biomedical Engineering with ICT to create new end-to-end Telemedicine applications for people with chronic disorders.

## **Prof Rose-Marie Dröes**

### ***INDUCT speaker***

Dept of Psychiatry  
VU University medical center  
P.O. Box 74077  
1070 BB Amsterdam  
The Netherlands  
[rm.droes@vumc.nl](mailto:rm.droes@vumc.nl)



Prof Dröes graduated in Human movement sciences in 1981 and specialised in psychosocial care for people with dementia. She received her PhD degree in the Faculty of Medicine of VUmc in 1991. Since then she worked at the department of Psychiatry of VUmc and the regional mental health care organisation. In 2009 she became a full professor of psychosocial care in dementia. She published more than 200 papers, several books, and is the developer of the Meeting centres support programme for people with dementia and their carers of which there are now more than 140 in the Netherlands and recently also several in Italy, Poland and the UK, set up in the European MeetingDem project. She is partner of the Alzheimer center VUmc and board member of the Amsterdam Center on Aging VUmc-VU.



### **Floriana Mangiaracina (ESR8)**

Floriana is conducting her research “Using the iPad for self-management, health promotion activities and social inclusion”, under the supervision of Prof Rose-Marie Dröes. She graduated at the University of Padova in Cognitive psychology (BCs) and at the University of Bologna in Applied Cognitive psychology (MSc). Additionally, she deepened her knowledge in the field of dementia and in research by doing her internship at the VU University Amsterdam.



### **Dr Jen Martin**

***INDUCT speaker***

NIHR MindTech Healthcare Technology Cooperative  
The University of Nottingham  
Innovation Park, Triumph Road  
Nottingham, NG7 2TU  
United Kingdom  
[jennifer.martin@nottingham.ac.uk](mailto:jennifer.martin@nottingham.ac.uk)



Jen Martin has worked in the healthcare technology field for over 10 years and is MindTech's programme manager. Before joining MindTech, Jen was Senior Research Fellow in Human Factors at the University of Nottingham where her research was focused on the application of user-centred design for the development of medical devices and she has published widely in this area. She has also worked at the NHS National Patient Safety Agency where she led the Human Factors team. She currently serves on the Human Factors Committees for the Association of the Advancement of Medical Instrumentation (AAMI).

## **Dr Henriëtte van der Roest**

### ***External speaker***

Dept of Elderly Care Medicine  
EMGO+ Institute  
VU University medical center  
P.O. Box 74077  
1070 BB Amsterdam  
The Netherlands  
[hg.vanderroest@vumc.nl](mailto:hg.vanderroest@vumc.nl)



Henriëtte van der Roest studied Social Psychology at VU University Amsterdam (1995-2001). In 2005 she started her PhD study at the VU University medical center/GGZ Buitendamstel on *Care needs in dementia and digital interactive information provisioning*. From October 2008 to February 2009 she worked as a researcher at University College London. Since March 2009 she is assigned as a researcher at the Department of Elderly Care Medicine, VU University medical center Amsterdam. Currently Henriëtte is involved in the SHELTER project; an European study that aims to validate a comprehensive assessment tool, the Minimum Data Set (MDS) for long term care residents (InterRAI-LTCF) as a methodology to assess the provision of care in long term care facilities in Europe. The study will ultimately lead to the creation of the first, cross-national European database of long term care residents (Shelter database) containing information previously not available on residents typology and outcomes, quality measures and services characteristics. Other topics she is interested in include dementia care, assistive technology for dementia.

## **Martina Vanova (ESR15)**

Martina studied psychology at Comenius University in Bratislava (Slovakia). She worked as a psychologist in a day-care centre for people with dementia with a main focus on cognitive screening and cognitive training for healthy seniors. Within INDUCT Martina is focusing on evaluation of cognitive rehabilitation programme GRADIOR in people with dementia and MCI, which is also a topic of her PhD at University of Salamanca (Spain).



*The academic affiliations and biographies of the other technology experts will follow soon.*

## Other roles during the 2<sup>nd</sup> INDUCT School

### **Dr Nancy Nicolson**

#### ***Ombudsman***

Department of Psychiatry and Neuropsychology  
MHeNS, FHML  
Maastricht University  
P.O. Box 616  
6200 MD Maastricht  
[n.nicolson@maastrichtuniversity.nl](mailto:n.nicolson@maastrichtuniversity.nl)



Nancy Nicolson, Associate Professor in Psychiatry & Neuropsychology, has a BA in Human Biology (Stanford) and a PhD in Behavioral Biology (Harvard). Her research focuses on the psychobiology of stress in aging, affective and fatigue disorders, and responses to stress in relation to childhood trauma and adversity in adults and adolescents, using experience sampling and salivary hormone assessment to study real life as well as laboratory settings. She recently stepped down as coordinator of the Psychopathology specialisation of the Research Master Cognitive and Clinical Neuroscience, PhD coordinator and confidential advisor for the School for Mental Health and Neuroscience, and chair of the faculty Promovendi Commission at the UM. In her role as INDUCT Ombudsman, she will offer confidential and informal assistance to help resolve any work-related conflicts or grievances, and to improve the overall quality of the working environment, with special attention to the ESRs.

#### *Senior chairs (staff/speakers):*

The INDUCT School will be chaired by senior speakers. The senior chair appointed for each particular day will chair each session, introduce each speaker, and carry out the welcome and closure. He/she will make an inventory of the expectations of the participants regarding the content of the day, and whether these have been met.

#### *Practical assistance (staff):*

The local coordination team and Training Manager will be the first point of call for issues regarding registration, accommodation, venue, technological equipment, coffee/lunch etc. They will also monitor the time for the activities.

## 7. ESRs



**Yvette Vermeer – ESR1 (UCL-UK)**

[y.vermeer@ucl.ac.uk](mailto:y.vermeer@ucl.ac.uk)

***Empowerment and surveillance for people with dementia***

*Supervised by: Prof Paul Higgs, Dr Georgina Charlesworth (University College London)*

**Secondment 1 to:** Karolinska Institute

**Secondment 2 to:** Alzheimer Europe



**Sébastien Libert – ESR2 (UCL-UK)**

[s.libert@ucl.ac.uk](mailto:s.libert@ucl.ac.uk)

***Brain training as an exclusionary process in people with dementia***

*Supervised by: Prof Paul Higgs, Dr Georgina Charlesworth (University College London)*

**Secondment 1 to:** Alzheimer Europe

**Secondment 2 to:** IDES



**Sophie Gaber – ESR3 (KI-SE)**

[sophie.gaber@gmail.com](mailto:sophie.gaber@gmail.com)

***Everyday technology in public space meets people with dementia***

*Supervised by: Prof Louise Nygard, Dr Camilla Malinowsky (Karolinska Institute)*

**Secondment 1 to:** University of Witten

**Secondment 2 to:** ADI Turkey



**Sarah Wallcook – ESR4 (KI-SE)**

[sarahwallcook@gmail.com](mailto:sarahwallcook@gmail.com)

***Access and ability to use everyday technology among older adults with and without dementia across different countries***

*Supervised by: Prof Louise Nygard, Dr Camilla Malinowsky (Karolinska Institute)*

**Secondment 1 to:** University College London

**Secondment 2 to:** WFOT



**Harleen Rai – ESR5 (UoN-UK)**

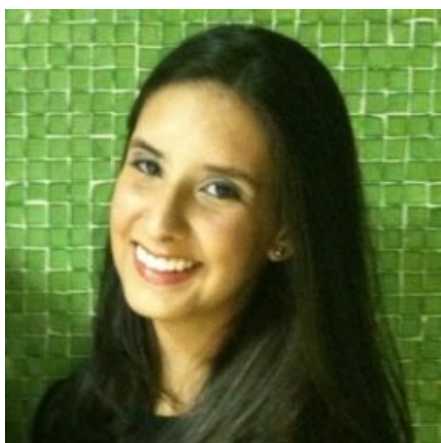
[Harleen.Rai@nottingham.ac.uk](mailto:Harleen.Rai@nottingham.ac.uk)

***Adapting Cognitive Stimulation Therapy (CST) to a tablet system***

*Supervised by: Prof Martin Orrell, Prof Justine Schneider (University of Nottingham)*

**Secondment 1 to:** IDES

**Secondment 2 to:** ADI Indonesia



**Aline Cavalcanti Barroso – ESR6 (UoN-UK)**

[Aline.Cavalcantibarroso@nottingham.ac.uk](mailto:Aline.Cavalcantibarroso@nottingham.ac.uk)

***Using computer technology to enable arts and crafts for people with dementia in care homes***

*Supervised by: Prof Justine Schneider, Prof Martin Orrell (University of Nottingham)*

**Secondment 1 to:** VU Medical Center

**Secondment 2 to:** Karolinska Institute





**Joeke van Santen – ESR7 (VUMC-NL)**

[joekevansanten@gmail.com](mailto:joekevansanten@gmail.com)

***Exergaming in dementia***

*Supervised by: Prof Rose-Marie Dröes, Dr Franka Meiland (VU Medical Center)*

**Secondment 1 to:** Silverfit

**Secondment 2 to:** IDES



**Floriana Mangiaracina – ESR8 (VUMC-NL)**

[floriana.mangiaracina@gmail.com](mailto:floriana.mangiaracina@gmail.com)

***Using the iPad for self-management, health promotion activities, and social inclusion***

*Supervised by: Prof Rose-Marie Dröes, Dr Franka Meiland (VU Medical Center)*

**Secondment 1 to:** MindTech

**Secondment 2 to:** EuMedianet



**Sara Bartels – ESR9 (MU-NL)**

[sara.bartels@maastrichtuniversity.nl](mailto:sara.bartels@maastrichtuniversity.nl)

***E-monitoring in people with early dementia***

*Supervised by: Prof Frans Verhey, Dr Marjolein de Vugt (Maastricht University)*

**Secondment 1 to:** Karolinska Institute

**Secondment 2 to:** EUMedianet



**Hannah Christie – ESR10 (MU-NL)**

[Hannah.christie@maastrichtuniversity.nl](mailto:Hannah.christie@maastrichtuniversity.nl)

***Digital engagement to enhance social inclusion and reduce stigma in dementia***

*Supervised by: Prof Frans Verhey, Dr Marjolein de Vugt (Maastricht University)*

**Secondment 1 to:** MindTech

**Secondment 2 to:** Betawerk



**Rose Miranda – ESR11 (VUB-BE)**

[rar.miranda912@gmail.com](mailto:rar.miranda912@gmail.com)

***The evaluation of palliative care as a complex health technology for people with dementia in nursing homes***

*Supervised by: Prof Lieve van den Block, Dr Lara Pivodic (VU Brussels)*

**Secondment 1 to:** University of Hertfordshire

**Secondment 2 to:** Charles University



**Annelien van Dael – ESR12 (VUB-BE)**

[annelienvandael@gmail.com](mailto:annelienvandael@gmail.com)

***The effectiveness of advance care planning (ACP) as a complex health technology for people with dementia in nursing homes***

*Supervised by: Prof Lieve van den Block, Dr Lara Pivodic (VU Brussels)*

**Secondment 1 to:** University of Hertfordshire

**Secondment 2 to:** Charles University



**Kate Shiells – ESR13 (UK-CZ)**

[kshiells84@hotmail.com](mailto:kshiells84@hotmail.com)

***Care programmes and ICT support in different countries***

*Supervised by: Prof Iva Holmerová (Charles University)*

**Secondment 1 to:** VU Brussels

**Secondment 2 to:** IDES



**Ángel C. Pinto Bruno – ESR14 (VU-NL)**

[acpintobr@gmail.com](mailto:acpintobr@gmail.com)

***Internet support for informal caregivers of people with dementia***

*Supervised by: Prof Annemieke van Straten (VU University), Prof Anne Margriet Pot (WHO), Dr Annet Kleiboer (VU University)*

**Secondment 1 to:** WHO

**Secondment 2 to:** University of Nottingham



**Martina Vanova – ESR15**

[investigacion5@intras.es](mailto:investigacion5@intras.es)

***Evaluation of GRADIOR, a cognitive rehabilitation application for dementia***

*Supervised by: Prof Manuel Franco, Dr J. Antonio García Casal*

**Secondment 1 to:** University of Nottingham

**Secondment 2 to:** University of Nottingham



## 8. INDUCT delegates

*Delegates coming to the 2<sup>nd</sup> INDUCT School are listed below in alphabetical order. Please note that this overview is subject to changes.*

No.	Name	Role	Affiliations	Present on:
1	Ann Gibbons	Admin for WP1 Management	University of Nottingham <a href="mailto:Ann.Gibbons@nottingham.ac.uk">Ann.Gibbons@nottingham.ac.uk</a>	Mon, Tue, Wed
2	Prof Annemieke van Straten	Supervisor ESR14	VU University <a href="mailto:a.van.straten@vu.nl">a.van.straten@vu.nl</a>	Tue
3	Dr Camilla Walles Malinowsky	Supervisor ESR3 + ESR4	Karolinska Institutet <a href="mailto:Camilla.Malinowsky@ki.se">Camilla.Malinowsky@ki.se</a>	Tue
4	Chris Roberts	2 <sup>nd</sup> -Level Partner	EWGPWD <a href="mailto:Mason4233@live.co.uk">Mason4233@live.co.uk</a>	Mon, Tue
5	Dr Deborah Oliveira	Project Manager (PM)	University of Nottingham <a href="mailto:Deborah.Deoliveira@nottingham.ac.uk">Deborah.Deoliveira@nottingham.ac.uk</a>	Every day
6	Dr Frances Bunn	2 <sup>nd</sup> -Level Partner	University of Hertfordshire <a href="mailto:f.bunn@herts.ac.uk">f.bunn@herts.ac.uk</a>	Tue

<b>7</b>	Dr Franka Meiland	Supervisor ESR7 + ESR8	VU Medical Centre <a href="mailto:fj.meiland@vumc.nl">fj.meiland@vumc.nl</a>	Mon, Tue
<b>8</b>	Prof Frans Verhey	Supervisor ESR9 + ESR10 Training Coordinator	Maastricht University <a href="mailto:f.verhey@maastrichtuniversity.nl">f.verhey@maastrichtuniversity.nl</a>	Mon evening, Tue, Wed morning
<b>9</b>	Idalina Aguiar	2 <sup>nd</sup> -Level Partner	European Working Group for People with Dementia (EWGPWD) <a href="mailto:info@alzheimer-europe.org">info@alzheimer-europe.org</a>	Mon, Tue
<b>10</b>	Dr Inge Klinkenberg	Training Manager (TM)	Maastricht University <a href="mailto:inge.klinkenberg@maastrichtuniversity.nl">inge.klinkenberg@maastrichtuniversity.nl</a>	Every day
<b>11</b>	Iva Coelho	2 <sup>nd</sup> -Level Partner	Carer affiliated with EWGPWD <a href="mailto:iva.coelho@gmail.com">iva.coelho@gmail.com</a>	Mon, Tue
<b>12</b>	Prof Iva Holmerová	Supervisor ESR13 Ethics Advisor (EA), WP6 Leader	Charles University <a href="mailto:iva.holmerova@gerontocentrum.cz">iva.holmerova@gerontocentrum.cz</a>	Tue
<b>13</b>	Jayne Goodrick	2 <sup>nd</sup> -Level Partner	Carer affiliated with EWGPWD <a href="mailto:bazi123@hotmail.co.uk">bazi123@hotmail.co.uk</a>	Mon, Tue

<b>14</b>	Prof Justine Schneider	Supervisor ESR5 + ESR6 Equality Advisor & Recruitment and Equal Opportunities Coordinator (REOC)	University of Nottingham <a href="mailto:justine.schneider@nottingham.ac.uk">justine.schneider@nottingham.ac.uk</a>	Mon, Tue
<b>15</b>	Dr Lara Pivodic	Supervisor ESR11 + ESR12	VU Brussels <a href="mailto:Lara.Pivodic@vub.ac.be">Lara.Pivodic@vub.ac.be</a>	Tue
<b>16</b>	Prof Lieve van den Block	Supervisor ESR11 + ESR12 WP5 leader Secondment Coordinator (SC)	VU Brussels <a href="mailto:lvdblock@vub.ac.be">lvdblock@vub.ac.be</a>	Tue
<b>17</b>	Prof Louise Nygård	Supervisor ESR3 + ESR4 WP4 leader	Karolinska Institutet <a href="mailto:louise.nygard@ki.se">louise.nygard@ki.se</a>	Tue
<b>18</b>	Dr Marjolein de Vugt	Supervisor ESR9 + ESR10	Maastricht University <a href="mailto:m.devugt@maastrichtuniversity.nl">m.devugt@maastrichtuniversity.nl</a>	Mon, Tue, Wed morning
<b>19</b>	Prof Martin Orrell	Supervisor ESR5 + ESR6 Network Coordinator (NC)	University of Nottingham <a href="mailto:M.Orrell@nottingham.ac.uk">M.Orrell@nottingham.ac.uk</a>	Mon evening, Tues, Wed morning
<b>20</b>	Dr Nancy Nicolson	Ombudsman	Maastricht University <a href="mailto:n.nicolson@maastrichtuniversity.nl">n.nicolson@maastrichtuniversity.nl</a>	Mon, Tue

<b>21</b>	Nélida Aguiar	2 <sup>nd</sup> -Level Partner	Carer affiliated with EWGPWD <a href="mailto:nelidaaguiar@msn.com">nelidaaguiar@msn.com</a>	Mon, Tue
<b>22</b>	Dr Nicole Batsch	2 <sup>nd</sup> -Level Partner	Alzheimer Disease International (ADI) <a href="mailto:nlbatsch@yahoo.com">nlbatsch@yahoo.com</a>	Tue
<b>23</b>	Nina Baláčková	2 <sup>nd</sup> -Level Partner	European Working Group for People with Dementia (EWGPWD) <a href="mailto:bariz@centrum.cz">bariz@centrum.cz</a>	Mon, Tue
<b>24</b>	Prof Olga Štěpánková	Supervisor ESR13	ČVUT Praha <a href="mailto:step@labe.felk.cvut.cz">step@labe.felk.cvut.cz</a>	Tue
<b>25</b>	Pablo Sánchez	Commercial Exploitation Coordinator (CEC)	IDES / INTRAS	Mon, Tue, Wed
<b>26</b>	Prof Paul Higgs	Supervisor ESR1 + ESR2 WP3 leader	University College London <a href="mailto:p.higgs@ucl.ac.uk">p.higgs@ucl.ac.uk</a>	Mon evening, Tues, Wed morning
<b>27</b>	Prof Rose-Marie Dröes	Supervisor ESR7 + ESR8 Research Coordinator (RC)	VU Medical Centre <a href="mailto:rm.droes@vumc.nl">rm.droes@vumc.nl</a>	Mon, Tue, Thurs